

INDUSTRIAL SOLUTION EVENT FOR MANUFACTURING INDUSTRY

A PAMERINDO INDONESIA TRADE EVENT

# MANUFACTURING SURABAYA

## 13 - 16 July 2022

Smart Event | Grand City Convention & Exhibition Centre  
Surabaya - Indonesia

**BUYERS GUIDE**



## The 16<sup>th</sup> International Manufacturing Machinery, Equipment, Materials and Service Exhibition

Organised by:



Sustainable Events



This event is powered by  
**Renewable  
Electricity**

In Conjunction with:



# GENERAL INFORMATION

## MANUFACTURING SURABAYA 2022

**Manufacturing Surabaya 2022** is the dedicated annual exhibition for manufacturing Machinery, Equipment, Materials, and Services event. With East Java experiencing significant level of industrial growth, Manufacturing Surabaya is the perfect platform for industry professionals from the global manufacturing industry to showcase their latest products and meet the regions key decision makers - right in East Java's manufacturing heartland!

Co-located with four other industries events including Machine Tool Surabaya, Tools & Hardware Surabaya, Industrial Automation & Logistics Surabaya, and Packaging, Plastic, Mould & Die Surabaya, the exhibitions have become the most trustable and largest manufacturing trade show for machinery, supplies, and equipment exhibitions in East Indonesia – all under one roof!

## EVENT INFORMATION

Edition	: The 16 <sup>th</sup> International Manufacturing Machinery, Equipment, Materials and Services Exhibition		
Date	: 13 – 16 July 2022		
Opening hours	: 13 – 15 July (Wednesday – Friday)	: 10.00 – 18.00 WIB	
	: 16 July (Saturday)	: 10.00 – 17.00 WIB	
Venue	: Grand City Convention & Exhibition Center, Surabaya - Indonesia		
Pre-registration	: <a href="https://www.manufacturingsurabaya.com/onlineregistration">https://www.manufacturingsurabaya.com/onlineregistration</a>		

## OFFICIAL HOTELS

Quote **Manufacturing Surabaya 2022** for special rates.



**Double Tree by Hilton Surabaya**  
Jalan Tunjungan 12 East Java 60275  
Surabaya, Indonesia  
T: +62-31-985 88888  
E: Andy.Sadikin@Hilton.com



**Swiss-Belinn Tunjungan Surabaya**  
Jalan Tunjungan 101  
Surabaya 60271, Indonesia  
T: +62-31-990 01999  
E: adossisu@swiss-belhotel.com

## DISTANCE INFORMATION

The exhibition centre is situated:

**44 minutes**

Juanda International Airport

**24 minutes**

Tanjung Perak Harbour

**7 minutes**

Surabaya Gubeng Station

**5 minutes**

Double Tree hotel

**4 minutes**

Swiss-Belinn hotel

## HOW TO VISIT THE SHOW



**Registration is queue-free and paperless!**

We have no onsite registration forms, so scan the barcode here, and we'll see you on the floor!

**WHY YOU SHOULD REGISTER ONLINE?**



Avoid the long queuing



No waste carbon and helps save trees!



Save more time

# GENERAL INFORMATION

## HOW TO VISIT THE SHOW

WE PROVIDE VARIOUS WAYS TO HELP YOU REGISTER TO OUR SHOW!



If you are our gold visitor, you may collect your visitor badge upon presenting your visitor pre-registration code to our team at the **GOLD REGISTRATION** booth.



You can do the online registration at the venue (on-site) by scanning the barcode at the entrance gate.



Please go to the **ONSITE REGISTRATION** booth to do the self-registration by using the laptop we provide at the venue.



If you have any problems during the online registration, please go to the **HELP DESK** booth, so we can help you to check your data.



Admission to trade and business visitors only



Visitors in shorts, bermudas, singlets, slippers or sports sandals will not be allowed entry



No children under 18 years will be admitted

## HEALTH & SAFETY STANDARD



Your safety is our utmost concern! We have safety standards at our events and we are committed to bringing the best services to the industry. Whether they are our exhibitors, visitors, speakers, sponsors, media, all customers can come to our events to connect, learn, know more, and as well as do more business – effectively, safely, and with confidence.

In a post-COVID-19 environment, all Pamerindo Indonesia events will continue to prioritise the health and safety of colleagues and customers, and in the first instance. It will be run in accordance with official government and local authority guidance, as well as any venue or location-specific regulations.



Wear face mask properly



Keep a safe distance



Wash your hands or sterilize with our sanitizers



Temperature check & monitoring



Completed the COVID-19 Vaccination



Please refrain from hand shaking

## SUSTAINABILITY AT MANUFACTURING SURABAYA



**SUSTAINABILITY IS US!** We know sustainability is increasingly important to our attendees and exhibitors, as well as to our market as a whole. Running an exhibition gives us lots of opportunities to improve our impacts environmentally, socially, and economically in our host cities. We want to make our event more responsible and play a role in helping our markets improve its own sustainability through connecting people with the networks and knowledge they want to help solve the big challenges in our sector.



# PROGRAMME & ONSITE ACTIVITIES

## ● BIZMATCH

### Business Match Making: Connecting Manufacturing Industries

PT. Pamerindo Indonesia will host a business matching program to provide a series of high quality buyers meetings on site at the exhibition. This matchmaking service is expected to enhance your on-site experience and get the most out of your visit to Manufacturing Surabaya. Not only is this matchmaking service easy to use, it also helps you to schedule meetings with the vendors you are interested in well in advance.

We know your time is precious! Pre-Register your visit before 8 July 2022, to take advantage of this BizMatch program to schedule meetings with your choice from our key manufacturing vendors at the show.

## ● BRING YOUR WORK GROUP TO MANUFACTURING SURABAYA!

Pamerindo Indonesia welcomes groups of team to the exhibition! Get a special treatment, where your visit will include a tour led by the Organiser, who will provide an overview of the exhibition, answer questions about the exhibitors, besides assist you to set the business meeting with our exhibitors who are the key player in the industries.

To schedule your visit or should you have any questions, please drop a message to: Kartina, email: [kartina@pamerindo.com](mailto:kartina@pamerindo.com)



#### Group Visits Guidelines:

- At least one week prior notice is required.
- The group visit required for at least 8 visitors from same company /factory.
- Groups are responsible for their own accomodation but Organiser will provide the shuttle bus.
- Must wear the company uniform during the visit.
- Group visits not available before 10.30 a.m and after 4 p.m.
- Free access to The Lounge.

## ● LIVE DEMO

See the latest technology and products from our key players in four days exhibition.



## ● INDUSTRIAL BAZAAR BOOTH - NO. 1130

Find the tools you need for production or maintenance with a discount you can only find during Manufacturing Surabaya exhibition.



## ● MANUFACTURING VILLAGE / KAMPUNG INDUSTRI - NO. 918



We are proud to collaborate with some of the best Indonesian manufacturing start-ups who will showcase their creations during the show. Come, meet, and support them at the Manufacturing Village.

Further information, please contact Kartina, email: [kartina@pamerindo.com](mailto:kartina@pamerindo.com)

# PROGRAMME & ONSITE ACTIVITIES\*

TIME	DAY 1 - Wed, 13 July	DAY 2 - Thurs, 14 July	DAY 3 - Fri, 15 July	DAY 4 - Sat, 16 July	
10:00	<b>PRESS CONFERENCE: Manufacturing Surabaya Dukung Produk Lokal</b> bersama: <ul style="list-style-type: none"> <li>• Pamerindo Indonesia</li> <li>• Wakil Gubernur JATIM</li> <li>• KADISPERINDAG</li> <li>• Pertamina Lubricants</li> </ul>	<b>Session 1:</b> Visit Manufacturing Village/ Kampung Industri	<b>LIVESTREAM VISIT: Session 1:</b> Visit Manufacturing Village/ Kampung Industri	<b>LIVESTREAM: Session 1:</b> Report from show floor by Suara Surabaya	
11:00		<b>LIVESTREAM: Session 2:</b> First Machinery Product Presentation	<b>LIVESTREAM: Session 2:</b> Jaya Metal Product Presentation		
12:00	ISOMA BREAK	ISOMA BREAK	ISOMA BREAK	ISOMA BREAK	
13:00	<b>SHOW FLOOR:</b> <ul style="list-style-type: none"> <li>• <b>Seminar (hybrid):</b> "Dukungan Terhadap Manufaktur Lokal &amp; Jawa Timur melalui Seri Pameran Manufacturing" bersama:  <ul style="list-style-type: none"> <li>• DISPERINDAG,</li> <li>• KADIN,</li> <li>• Politeknik ATMI,</li> <li>• Stechoq Robotika Indonesia,</li> <li>• Garuda Food.</li> </ul> </li> <li>• <b>Show Visit to Manufacturing Village</b></li> </ul>				
14:00		<b>Session 3: Seminar (hybrid)</b> Industrial Operation Excellence	<b>Session 3: Student Visit:</b> "Mempersiapkan SDM Dalam Menghadapi Industri 4.0" bersama: <ul style="list-style-type: none"> <li>• Mitsubishi Electric Indonesia,</li> <li>• Politeknik ATMI Surakarta,</li> <li>• KADIN Institute.</li> </ul>	<b>LIVESTREAM: Session 2:</b> Report from show floor by Suara Surabaya	
15:00					
16:00					
17:00	<b>LIVESTREAM:</b> Report from show floor by Suara Surabaya				

\* subject to change without prior notice, for further information please visit [www.manufacturingsurabaya.com](http://www.manufacturingsurabaya.com)

# FLOOR PLAN

A PAMERINDO INDONESIA TRADE EVENT



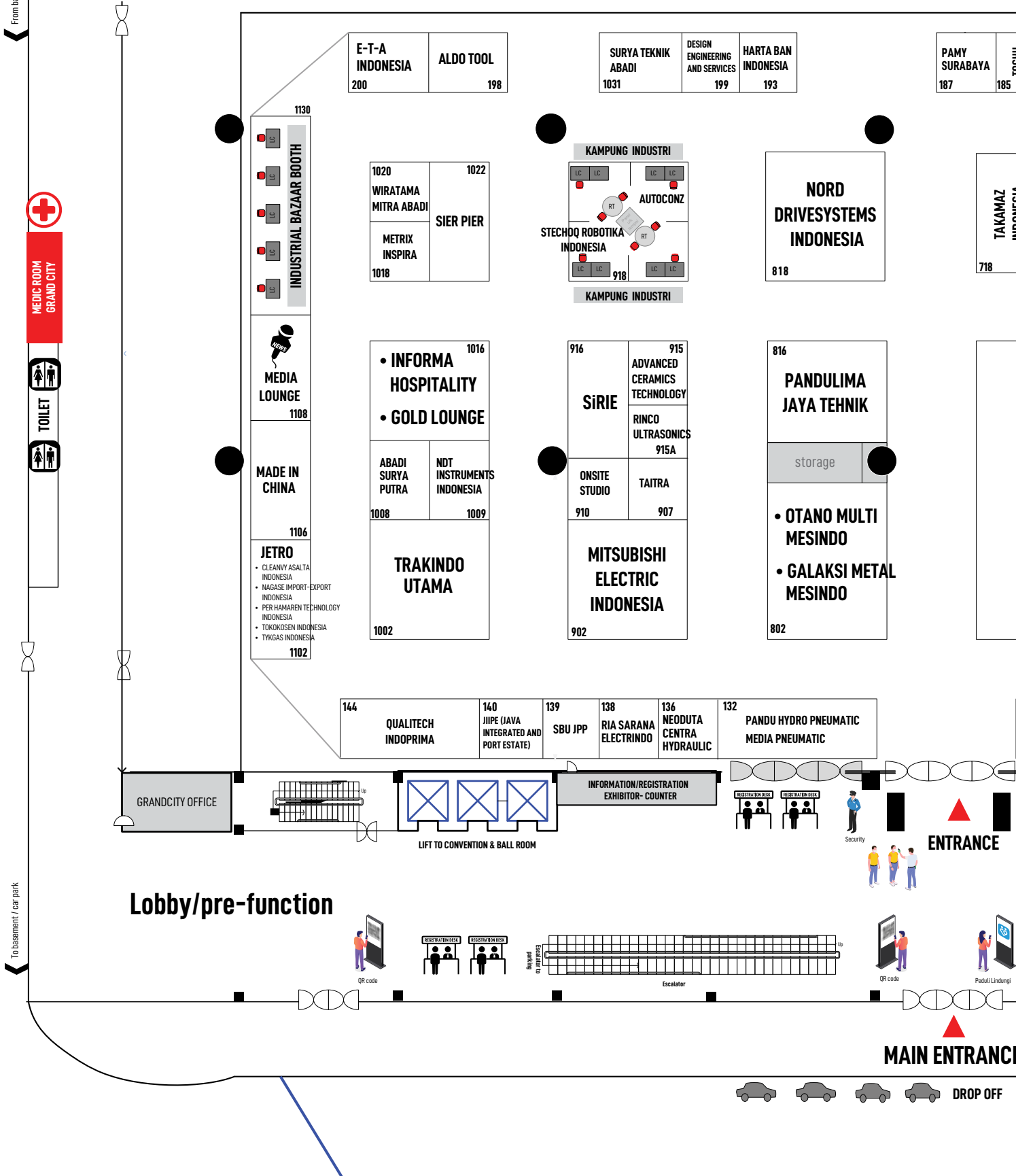
13 - 16 JULY 2022

GRAND CITY CONVENTION & EXHIBITION CENTRE,  
SURABAYA - INDONESIA



From basement / car park

To basement / car park

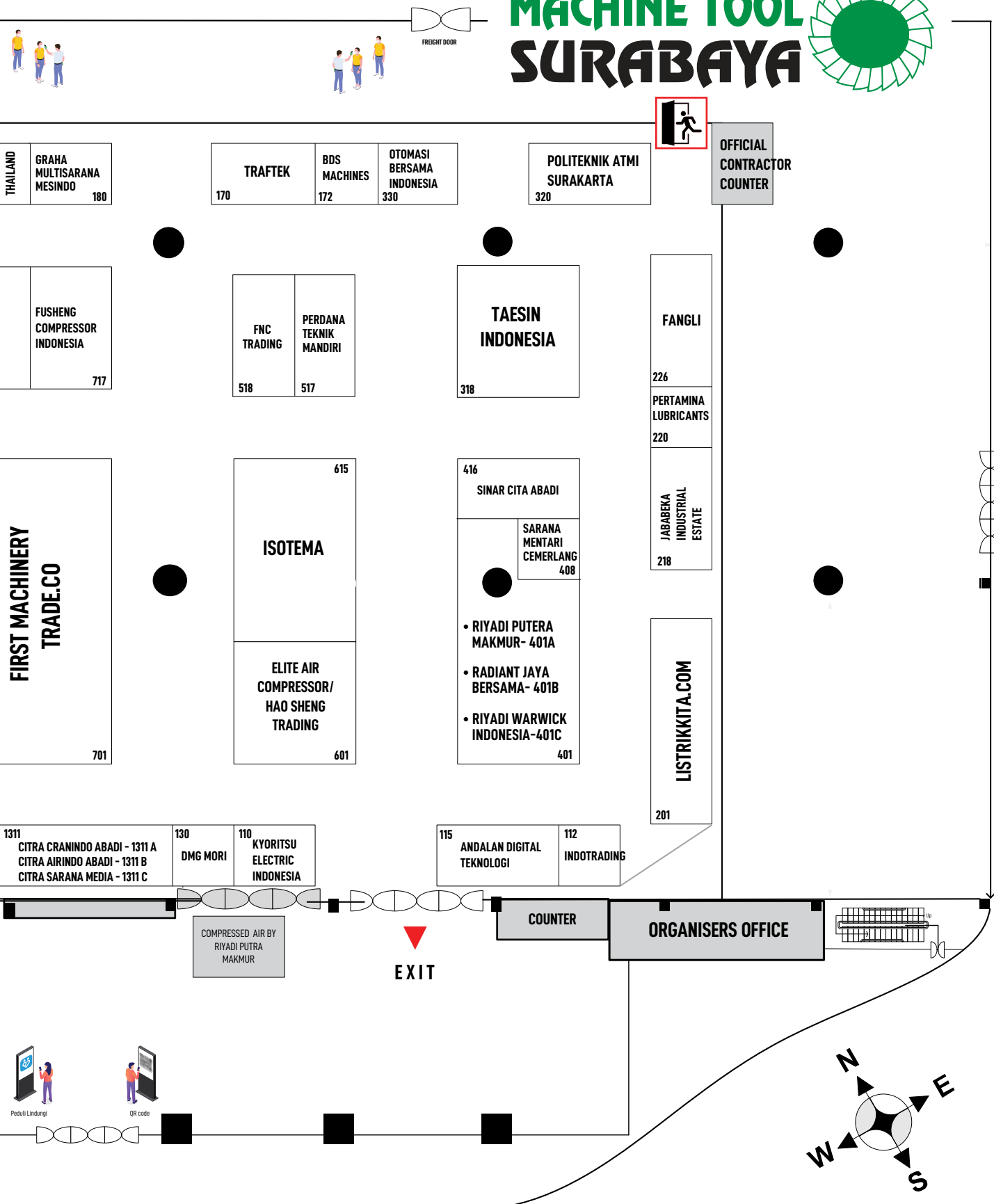
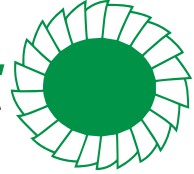


Lobby/pre-function

MAIN ENTRANCE

DROP OFF

# MACHINE TOOL SURABAYA



This floorplan is provisional only and is to be used for guidance only. Floorplans are modified and updated weekly. Contact the organisers for accurate up to date information.  
Date issued : 22 June 2022

# LIST OF EXHIBITORS

<b>A</b>	
ABADI SURYA PUTRA, PT	1008
ADVANCED CERAMICS TECHNOLOGY (M) SDN BHD	915
ALDO TOOL	198
ANDALAN DIGITAL TEKNOLOGI, PT	115
AUTOCONZ	918
<b>B</b>	
BDS MACHINES	172
BHUMI KENCANA SEJAHTERA, PT (SIRIE)	916
<b>C</b>	
CITRA AIRINDO ABADI, PT (CITRA GROUP)	1311B
CITRA CRANINDO ABADI, PT (CITRA GROUP)	1311A
CITRA SARANA MEDIA, PT (CITRA GROUP)	1311C
CLEANVY ASALTA INDONESIA, PT (JETRO)	1102
<b>D</b>	
DESIGN ENGINEERING AND SERVICES	199
DMG MORI	130
<b>E</b>	
ELITE AIR COMPRESSOR / PT HAO SHENG TRADING	601
E-T-A INDONESIA, PT	200
<b>F</b>	
FANGLI HOLDINGS CO., LTD	226
FIRST MACHINERY TRADE. CO	701
FNC TRADING CO., LTD	518
FUSHENG COMPRESSOR INDONESIA, PT	717
<b>G</b>	
GALAKSI METAL MESINDO, PT	802B
GRAHA MULTISARANA MESINDO, PT	180
<b>H</b>	
HARTA BAN INDONESIA, PT	193
<b>I</b>	
INDOTRADING.COM	112
ISOTEMA, PT	615
<b>J</b>	
JABABEKA INDUSTRIAL ESTATE	218
JIIPE SEZ (JAVA INTEGRATED INDUSTRIAL AND PORT ESTATE)	140
<b>K</b>	
KYORITSU ELECTRIC INDONESIA, PT	110
<b>L</b>	
LISTRICKITA.COM	201
<b>M</b>	
MADE-IN-CHINA.COM	1106
MEDIA PNEUMATIC, PT	132B
METRIX INSPIRA, PT	1018
MITSUBISHI ELECTRIC INDONESIA, PT	902
<b>N</b>	
NAGASE IMPOR-EKSPOR INDONESIA, PT (JETRO)	1102
NDT INSTRUMENTS INDONESIA, PT	1009
NEODUTA CENTRA HYDRAULIC, PT	136
NORD DRIVESYSTEMS INDONESIA, PT	818

<b>O</b>	
OTANO MULTI MESINDO, PT	802A
OTOMASI BERSAMA INDONESIA, PT	330
<b>P</b>	
PAMY SURABAYA	187
PANDU HYDRO PNEUMATICS, PT	132A
PANDULIMA JAYATEHNIK, PT	816
PER HAMAREN TECHNOLOGY INDONESIA, PT (JETRO)	1102
PERDANA TEKNIK MANDIRI, PT	517
PERTAMINA LUBRICANTS	220
POLITEKNIK ATMI SURAKARTA	320
<b>Q</b>	
QUALITECH INDOPRIMA, PT	144
<b>R</b>	
RADIANT JAYA BERSAMA, PT	401B
RIASARANA ELECTRINDO, PT	138
RINCO ULTRASONICS (M) SDN BHD	915A
RIYADI PUTRA MAKMUR, PT	401A
RIYADI WARWICK INDONESIA, PT	401C
<b>S</b>	
SARANA MENTARI CEMERLANG, PT	408
SBU JPP PUPUK KALTIM	139
SINAR CITA ABADI, PT	416
STECHEQ ROBOTIKA INDONESIA	918
SURABAYA INDUSTRIAL ESTATE RUNGKUT, PT (PT SIER)	1022
SURYA TEKNIK ABADI, PT	1031
<b>T</b>	
TAESIN INDONESIA, PT	318
TAIWAN EXTERNAL TRADE DEVELOPMENT COUNCIL (TAITRA)	907
TAKAMAZ INDONESIA, PT	718
TOCHU THAILAND CO., LTD	185
TOKOKOSEN INDONESIA, PT (JETRO)	1102
TRAFTEK	170
TRAKINDO UTAMA, PT	1002
TYKGAS INDONESIA, PT (JETRO)	1102
<b>W</b>	
WIRATAMA MITRA ABADI	1020

\* Data as updated as of 22 June, 2022





# EXHIBITING COMPANIES

<https://exhibitors.informamarkets-info.com/event/MFS2022>

# EXHIBITING COMPANIES

ABADI SURYA PUTRA, PT

1008



PT. Abadi Surya Putra was established in 2006. Our head office located in Surabaya City, East Java Province, Indonesia. Abadi Surya Putra is one of the official distributors that provides Ceccato brand screw compressor products which are part of Atlas Copco. Because we observe that in line with the rapid development of the economy and industrial sector in Indonesia, we are aware of the importance supplying quality equipment to ensure the effectiveness and efficiency in industrial operations.



### CSM 30

CSM Series oil-injected screw compressors series is built on a trustworthy technology which increases its efficiency and makes CSM screw compressor a reliable performer. These ranges are also suitable for more demanding applications and can be deployed in harsh working conditions.



### CDX 55

CDX dryers are installed with professional control technology to inform all important information to the user such as status of the refrigerant dryer, status of the fan, alarm about high or low dewpoint, fan failure etc.



### PRIMAK D40

Pneumatech has provided industry-leading compressed air and gas treatment solutions to production facilities across the globe. Our innovative machines and accessories provide clean, dry air and gas to industries such as automotive, textile, power generation, oil & gas, food & beverage, and electronics.

ADVANCED CERAMICS TECHNOLOGY (M) Sdn Bhd

915



Advanced Ceramics Technology Malaysia is the Manufacturing Centre for The Crest Group, supplying ultrasonic equipment to all Crest Group member companies and prominent corporations around the world



### New Crest Powersonic Benchtop

The Powersonic® tabletop superior cleaning performance derives from the innovative technology used. The combination of cavitation and micro-currents achieves an intensive cleaning effect beyond that of any other cleaning method.



### SA-SERIES™ Solvent Precision Cleaning Systems

The SA-Series™ achieves superheat temperatures of 50°F above solvent boiling point. This reduces drying times, dragout and vapor emissions.



### BIOMEDICAL CLEANING SYSTEMS

Biomedical Line of Cleaners. From cost-effective benchtop cleaners to state-of-the-art consoles and endoscopic instrument cleaners.

ALDO TOOL

198



ALDO sebagai merk dagang dari PT. Celindo Multi Karya yang telah dikenal sejak tahun 1980 adalah sebuah jaminan mutu dan kehandalan untuk berbagai peralatan pertukangan, kelistrikan, rumah tangga, hingga aneka keperluan komersil seperti home industry dan otomotif.

Dengan dimulai dari perdagangan sederhana, ALDO berkembang dengan mengenal kebutuhan dan selera pasar Indonesia. Pengetahuan tentang kebutuhan dan selera masyarakat adalah satu hal yang menjadikan ALDO berkembang pesat. Berbekal dengan pengetahuan dan kualitas produk yang sangat memuaskan, ALDO makin melengkapi lini produknya dengan tidak hanya pada peralatan pertukangan atau hardware, namun makin meluas untuk mengikuti permintaan pelanggan yang telah mempercayakan beragam kebutuhannya pada merk ALDO.

PT. Celindo Multi Karya dengan brand ALDO Tools & Machinery adalah sebuah jawaban untuk keraguan para pelanggan dalam menemukan produk berkualitas yang tangguh, bermutu, tahan lama dan sangat kompetitif.



### Tools and Machinery

Kami menyediakan berbagai macam peralatan pertukangan, kelistrikan, rumah tangga, hingga aneka keperluan komersil seperti home industry dan otomotif.

ANDALAN DIGITAL TEKNOLOGI, PT

115



PT. Andalan Digital Teknologi is a privately-owned company specializing in Drive & Industrial Automation systems.



### General Drive Series VEICHI General Drive Series:

- Mini General Purpose Drive
- Heavy Duty & High Performance
- High Performance Vector Frequency Drive



### Special Drive for Electro-Hydraulic Systems

The Best Solution for Replace & Upgrade Injection Machine Application



### Economic PLC & HMI Series Economic & Compact PLC & HMI Series by VEICHI.

# EXHIBITING COMPANIES

AUTOCONZ

918



**Autoconz - The Future of Construction**  
Our goals is to provide the society with effective and efficient construction solution by implementing 3D printing for construction and digitalization. our vision is become the leader of 3D printing for construction in Indonesia in 2025. our mission is developing 3D printing machinery for construction and revitalizing construction through digitalization.



### 3DCP House

Rumah dengan menggunakan teknologi 3DCP. saat ini baru terbatas ukuran tipe 36 hingga 49. dengan waktu pengerjaan 49 Hari.



### 3DCP CO-WORKING SPACE

Perpaduan kayu jati dengan mortar hasil 3D Printing yang simetris menghasilkan visual yang aesthetic dan kekuatan untuk jangka panjang

BDS MACHINES

172



**Metal Core Drilling Technology, World-Class Quality.**  
Our claim: Precision from design to manufacturing, best possible material, first-class service.  
A good reputation doesn't just happen – it has to be worked at. This is what BDS has done: Since the company was founded in 1989, we have been producing magnetic core drill machines, core drills made from high-quality steel grades, beveling machines for preparing edges and chamfering and deburring machines for the metalworking industry.  
We have done this to such a high standard of quality that there is now worldwide demand for BDS products and they are used across the world. BDS is the reliable partner to industry, trade and specialist retailers. All over the world. BDS is the reliable partner to industry, trade and specialist retailers all over the world.  
Our Moto: Simply Better Drilling!



### MAB 825 KTS – Red Dot Winner 2021

MAB 825 KTS has won the prestigious Red Dot Award: Product Design 2021. Red Dot Design Awards, one of the most renowned design competitions in the world, has chosen our most innovative product for an award. Each year Red Dot Awards cherry-picks the very best of innovative design in the world of technology and this year has been no exception: The MAB 825 KTS Magnetic Drilling & Milling Machine With Cross-Table Base.  
The stable cross table allows offset drilling and hole patterns. The optional collet chuck available facilitates light-duty milling tasks such as elongated holes or slots. Ideal for milling, drilling, tapping, countersink and reaming.



### MABasic 35

35mm BDS Magnetic Core Drilling Machine With this new Core Drill machine concept, we close the gap for the professional user who does not want to make compromises in quality and performance but can do without convenience in favour of very good prices.  
Salient Features:  
12 Kgs Lightweight machine can be shifted by a single person.  
The strong electromagnet with small dimension makes it possible to drill in overhead conditions where mounting space is a limitation.  
Ergonomically designed for effortless drilling at awkward positions.  
No pilot hole required, direct drill the size you need.  
Scrap removal in form of solid pins.  
Travel case provided protects the machine from damage when not in use or being transported & also acts as a step on to access height locations.



### MAB 1300

Superior performance with exceptional power delivery. Equipped with Servo Assist Power Feed, which works like a power steering of a car, making the drilling effortless.  
Pure power! 2,300 W motor power, four speeds and a full package of features leave nothing to be desired.  
The MAB 1300 magnetic drilling machine goes to the limit of magnetic core drill technology.  
130 mm diameter drilling, 110 mm cutting depth, M42 Tapping/thread cutting, 2300 Watts reversible motor, Servo motor for effort-less power feed, 51 Kg.  
Largest hole cutting capacity in industry - 5-1/8" dia.  
Reversible motor for tapping and reaming.  
Infinitely variable torque control and full-wave control electronics.  
4-speed oilbath gearbox.  
Automatic internal lubrication.

BHUMI KENCANA SEJAHTERA, PT ( SIRIE )

916



Kawasan Industri dan Pergudangan Industrial Estate and Warehouse



Industrial Estate & Warehouse  
Kawasan Industri dan Pergudangan

CITRA AIRINDO ABADI, PT (CITRA GROUP)

1311B



PT. CITRA AIRINDO ABADI, established in August 2006, is a company specialized in Compressed Air Systems sales, consultation and services. Has installed 2.800 units air screw compressors for more than 1.000 customers by Maret 2022. The Company has become the largest HITACHI Air Compressor products authorized master dealer in Indonesia serving wide range of industries including, electronics, automotive, power plant, petrochemical, textile and food&beverages. Our strengths in both products quality and service allow us stand out among the competitors. We take responsibility for every products/services we sell. Our sister company is PT. Citra Sarana Media and PT. Citra Cranindo Abadi.



### HITACHI SCREW AIR COMPRESSOR (Oilfree and Oil Flooded Type)

HITACHI Rotary Screw Compressors offer wide range of choices up to 500 KW, from standard oil injected type to oil free screw compressor for clean air application with long years of experience. This type of compressor is different from other types of piston compressors, more durable and stubborn in usage, screw compressors can run 24 hours non-stop is different from a piston compressor whose maximum usage is in the range of 8 hours. Screw compressors usually have a much larger air flow delivery compared to piston compressors. Screw compressors are one of the most widely used in industry.



### RECIPROCATING AIR COMPRESSOR (Oilfree and Oil Flooded Type)

The Reciprocating Air Compressor (Hitachi Bebicon) is an industry-class piston compressor designed to operate for long periods of time per day up to 15 KW Motor Range. There are several types of Hitachi reciprocating air compressors, namely: Oil Flooded Bebicon, Oil Free Bebicon, Oil Free Booster, Package Bebicon Oil Free & Bebicon Packages Oil Flooded. Type of air compressor with oil lubrication suitable for industry manufacturing, automotive service workshops and pneumatic tools. While the type of air compressor without oil lubrication is suitable for manufacturing industries from electronics to Food and Beverages.

This is only small sample of hundreds of new product which will be on display at the show. It's based on information provided by exhibitors as of 22nd of June, 2022. NOTE: this list is NOT comprehensive. The layout of the buyer's guide is subject to Pamerindo's approval.



# EXHIBITING COMPANIES

CITRA CRANINDO ABADI, PT (CITRA GROUP)

1311A

## PT. CITRA CRANINDO ABADI

PT. CITRA CRANINDO ABADI is a company specialized in Mechanical Handling solution, providing hoist and crane sales, consultation, and services. We sell average more than a 500 unit of hoists yearly and have become the largest HITACHI Electric Chain Hoists & Rope Hoist authorized master dealer in Indonesia serving a wide range of Industries including electronics, automotive, power plant, petrochemical, textile, and food & beverages. With sufficient unit stocks and parts, our well-trained and dedicated people are able to provide 24/7 customer support, either through maintenance. Our Sister Company is PT. Citra Airindo Abadi and PT. Citra Sarana Media.



### ELECTRICAL CHAIN HOIST

- STANDARD TYPE (S-SERIES)
- HIGH SPEED TYPE (F-SERIES)

Electric Chain Hoists are used in a wide range of applications normally up to 5 ton to make cargo handling more efficient. A wide range of applications are provided for not only general machinery, automobile, can manufacturing and other plants but also for applications from primary to tertiary industries including warehouses and retail stores.

### ELECTRICAL WIRE ROPE HOIST

- A-SERIES HOIST
- V-SERIES HOIST

Electric Wire Rope Hoist (A-Series & V-Series) is a hoist with steel wire, reliable to be used in production facilities, warehouses, freight elevators and other. This model offer higher duty cycle and longer operation time up to 50 ton.



### CRANE SYSTEM & ACCESSORIES

Crane is a series of material handling systems to facilitate production. We as a crane fabricator with a team that is experienced in this field, providing quality production according to standards and crane systems, supported by workshops and our competent teams in Jakarta and Surabaya. Making it easier to reach our customers.

CITRA SARANA MEDIA, PT (CITRA GROUP)

1311C

## PT. CITRA SARANA MEDIA

PT. Citra Sarana Media, established in 2002, is leading company specialized in Clean Air System Solution and Air Audit. We do this by gaining deep understanding of our client's needs and business objectives and then applying our technical expertise, innovative ideas, and resources to achieve those target. Our aim at PT. Citra Sarana Media is to support our client's growth, profit and goals by delivering innovative solutions. PT. Citra Sarana Media thrives to provide highly reliable, well-designed and technically excellent products and services with competitive price. Our Sister Company is PT. Citra Airindo Abadi dan PT. Citra Cranindo Abadi.



### MARK & SUTO

**MARK:**  
PT. Citra Sarana Media was appointed to be Indonesia Regional Distributor for MARK screw air compressor. For Indonesia market, we will only promote MARK's Oil Injected Screw Air Compressor 7.5-75kw range, as well as a complete range of Refrigerated Dryers before we start to widen our air compressor range in the near future.

**SUTO:**  
SUTO provide innovative solutions for compressed air flow & gas measurements.

### ORION

Striving to make products that move you. At ORION we have consistently developed customer-oriented "monozukuri" manufacturing techniques. Since the time after the war when our company was established, we developed a wide range of products that had never before been produced in Japan, and we take pride in the fact that we have been able to shoulder our part as a driver of industry.

### NANO & INMATEC

**NANO:**  
Our backgrounds are in air and gas purification and our experience in this field spans a wide range of industries. We combine this knowledge and experience to ensure our products and services are designed and provided to meet the objectives and expectations of you - our customer.

**INMATEC:**  
INMATEC is an international market leader in the production of nitrogen generators and oxygen generators. Developed and produced in Germany, our systems are used all around the world. INMATEC stands for innovative technology from over 25 years of research and development "Made in Germany"!

CLEANVY ASALTA INDONESIA, PT (JETRO)

1102

## CLEANVY

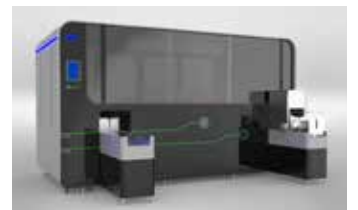
Our mother company in Japan, CLEANVY CORPORATION, had established in 1995 and have been dedicated this 26 years to development and manufacturing of washing machines for industry. We have 6 oversea branches and PT. CLEANVY ASALTA INDONESIA had been established in 2015 as our 5th branch. Our total sales of machine counted up to 3,600 units in all over the world. We are looking forward to serve you to find the best solution in your washing process with our experience and expertise.



**ELIOS**  
MOLD CLEANING MACHINE  
\* Best solution for injection mold maintenance  
\* Save time, save cost, with satisfying result



**CLOVA**  
One Bath Type Hydrocarbon Base Automatic Washing & Drying Machine  
\* Save Space, Save Cost, with maximal result in cleanliness  
\* Suitable for metal part degreasing after press/drawing/heat treatment, etc.



**CLV SERIES**  
Spin-Off model from our best selling signature series, CLEANVY.  
\* Modern Face with more user friendly functions  
\*\* Voice message  
\*\* Windows installed

This is only small sample of hundreds of new product which will be on display at the show. It's based on information provided by exhibitors as of 22nd of June, 2022. NOTE: this list is NOT comprehensive. The layout of the buyer's guide is subject to Pamerindo's approval.



# EXHIBITING COMPANIES

DESIGN ENGINEERING AND SERVICES

199



Partner for precision parts, with special 2nd process. Expert for reverse engineering project



### PRECISION PARTS AND MACHINE COMPONENTS

Precision parts with 2nd process, expert for reverse engineering parts



### CYLINDRICAL, ROUND PARTS & CARBIDE PARTS

Special non magnetic carbide parts



### EXTRUSION AND MACHINING ALUMINIUM PARTS

HEAT SINK, EV BATTERY PACK

DMG MORI

130

## DMG MORI

DMG MORI is a worldwide leading manufacturer of machine tools. In the "Global One Company", around 12,000 employees are in direct contact with over 100,000 customers from 55 industries. DMG MORI is present in 87 countries worldwide – with 16 production plants, 111 sales and service locations – and is actively advancing the future fields of automation, digitization and sustainability.

High-precision machine tools and technologies from DMG MORI are at the beginning of global value chains. Integrated automation and end-to-end digitization solutions extend our core business with turning and milling machines, Advanced Technologies, and Additive Manufacturing.

PT. DMG MORI INDONESIA is a subsidiary company of DMG MORI groups, with 30 employees based in Indonesia including 14 engineers to support our customers in Indonesia. Our Jakarta Technical Center is equipped with high-tech machines and is open to customers who want to do a test cut and have discussions with our experts.



### DMU | DMC monoBLOCK Series

monoBLOCK - The benchmark in all sectors

The monoBLOCK series has a machine concept for every sector: Be it 5-axis simultaneous machining, highly dynamic high-speed milling, integrated mill-turning, high-torque cutting or the broad field of productive part machining in 5 axes.



### NLX Series

Ultimate Performance for Parts Machining.

The NLX series are high-rigidity, high-precision turning centers capable of handling varieties of workpieces with superior turning capability ensured by the robust bed and outstanding milling performance achieved by the BMT (Built-in Motor Turret).



### DMG MORI 360° Digitization

DMG MORI is a trailblazer in the field of digitalisation for machine tool engineering. Under the keyword Integrated Digitization, DMG MORI provides software products and solutions along the entire value chain for future-proof manufacturing – for planning, preparation and production, as well as monitoring, maintenance and servicing. Always from the CELOS Machine to CELOS Manufacturing to the Digital Factory.

ELITE AIR COMPRESSOR / PT HAO SHENG TRADING

601



PT HAO SHENG TRADING is the only company that holds the ELITE AIR trademark in Indonesia which currently focuses on the field of electricity-saving compressors. Our company has been established since July 2001, has 4 branch offices and work shops in several major cities in Indonesia, including Tangerang, Cikarang, Surabaya and Semarang. We are here to provide solutions for customers in saving electricity costs on compressors so that they will be able to reduce production costs.



### ELITE AIR COMPRESSOR

Screw Compressor, Double Screw Compressor, High Pressure Compressor, Oil Free Compressor, Portable Compressor, Nitrogen Gas Generator, Air Dryer, Air Receiver Tank, Chiller, Genset, Various other industrial supporting instruments and Spareparts.



### Cummins Generator

Brushless, excite, adjust, revolved magnetic field excite, automatically, four poles, auto-ventilated design, long-term work, voltage regulator controls from no load to full load, PF0.8 to 1, class H insulation stator and rotor. Very sturdy rotor can sustain high speed operation, and with winding which allows good running with single phase, distorting loads, brushless exciter, class H insulation stator and rotor, on request higher dust and wet resistance projections.



### Chiller

Air Cooled Chiller of Box type, Water Cooled Chiller of Box type, Air Cooled Screw Chiller, Water Cooled Screw Chiller, and Spareparts.

# EXHIBITING COMPANIES

E-T-A INDONESIA, PT

200



PT. E-T-A Indonesia is a subsidiary of E-T-A Elektrotechnische Apparate GmbH (Germany), the world market leader in circuit protection and power management. E-T-A has a globe-spanning network in more than 60 countries with five production sites, twelve E-T-A subsidiaries and a great number of representatives. We ensure greatest proximity to customers and reliable delivery everywhere in the world.



#### n|Box IoT Series

Monitor parameters from various sensors and equipment, view in web dashboard, receive notification / alarms - power / energy, flow, temp. / humid. and limitless possibilities of applications.



#### Circuit Protection

E-T-A offers comprehensive solutions for protection of electronic equipment: circuit breakers, circuit protectors, relays, providing optimum protection against overcurrent for any kind of application for your industry.



#### System Solution

We offer solutions tailor-made to your applications. From the initial concept to the complete engineering design including rapid prototyping – from mechanical to electronic hardware to user interfaces. Software-based E-T-A system solutions quickly, reliably and effectively provide you with comprehensive information. In connection with Industry 4.0 or the Internet of Things (IoT), this opens up a wealth of possibilities.

FIRST MACHINERY TRADE. CO

701



First Machinery Trade Co. is the market leader for CNC machines in Indonesia. We have renewed our commitment to be the FIRST in Quality, Product, and Service, which is shown through our satisfied customers in multitudes of industrial sectors.



#### HARTFORD MACHINING CENTER

Hartford now not only becomes the biggest machining center company in Taiwan, but also Taiwan's biggest CNC machine tools exporter. What's more? Hartford is the World's leading brand in CNC machining center industry. And now, Hartford is ready for the next 50 years.

CNC Machining Center, CNC Double Column Machining Center



#### CHMER WIRECUT EDM

With almost 3 decades of EDM development and manufacturing experience, CHMER and our affiliated companies are continuously striving to design and produce the finest quality EDM products. Through our in-house R&D department, we have developed our highly reliable and user friendly CNC controller and state-of-the art EDM power supplies. Through our in-house software department, we have developed EDM specific software to optimize the cutting performance between the power supply and controller plus provide user specific software for special applications.

CNC EDM Wirecut, CNC EDM Die sinker, High Speed Milling



#### TAIKAN Machine Tool

Shenzhen Create Century Machinery CO., LTD (Taikan) is a wholly-owned subsidiary of Jinsheng Smart(Ticker symbol: 300083): 300083). Founded in 2005, the company is a national high-tech enterprise of intelligent equipment, integrating R&D, production, sales and service. We have Taikan Yuken and other brands, machining center category is complete, including CNC drilling and tapping machine, parts processing center, mold processing center, lathe, double column machining center, specular machine, engraving and milling machine, high light machine and other series of precision equipment. Shenzhen Create Century Machinery CO.,LTD has become a leading domestic high-end intelligent equipment manufacturer through years of development.

CNC Machining Center



#### DOOSAN MACHINE TOOL

Doosan Machine Tools manufactures and offers customized models to meet customers' increasingly diverse needs.

CNC Machining Center, CNC Lathe, CNC swissturn.

FNC TRADING CO., LTD

518



FNC provides Korean Industrial Air compressor, Air and Gas treatment equipment and management systems like Air dryer, Desiccant air dryer, PSA GAS Generator, Vacuum pump and Industrial Power transmission couplings.

For more detailed information and services, Please contact PT FNC INDONESIA ; JL BOULEVARD ARTHA GADING, RUKAN ARTHA GADING NIAGA, BLOK D NO. 10, JAKARTA UTARA TEL : 021 4585 5000 FAX : 021 4587 6918 Email : fnc\_jkt@yahoo.co.kr



#### SCREW AIR COMPRESSOR

INDUSTRIAL AIR & GAS COMPRESSOR, AIR DRYER



#### FLEXIBLE COUPLING

GRID COUPLING, GEAR COUPLING, DISK COUPLING, MINI COUPLING, UNIVERSAL COUPLING

# EXHIBITING COMPANIES

FUSHENG COMPRESSOR INDONESIA, PT

717



Since 1854, FS-Curtis has carried on the tradition of producing high-quality, world-class industrial equipment in the U.S. heartland, St. Louis, MO. FS-Curtis has earned the reputation for building the most rugged industrial-duty air compressors you can buy.



**Oil injected, Oil Free Screw Compressor, Oil Free Scroll Compressor, Oil Free Water Injected Screw Compressor**  
Oil Injected, Oil Free Screw Compressor, Quality Air Product.

GALAKSI METAL MESINDO, PT

802B



WELDING ROBOT, WELDING AND CUTTING MACHINE, CONVENTIONAL LATHE AND MILLING MACHINE, BEVELLING MACHINE

GRAHA MULTISARANA MESINDO, PT

180



PT. Graha Multisarana Mesindo adalah perusahaan yang bergerak di bidang cleaning distributor, pengadaan perlengkapan industri, safety equipment, cleaning machine, dan house keeping. Kami telah mensupply berbagai keperluan perusahaan di seluruh Indonesia, dari perusahaan dalam bidang industri kecil hingga multinasional. Seiring berkembangnya dunia industri, bisnis dan teknologi informasi, kami mendirikan "toko online", [www.grahamultisarana.com](http://www.grahamultisarana.com) untuk memenuhi kebutuhan pasar yang semakin luas.



**WYPALL X60 Jumbo Roll Wiper**

WYPALL\* X60 Wipers bring the absorbing power of our HYDROKNIT\* technology to a lighter-weight wiper. An outstanding, versatile wiper - durable enough to handle general cleaning tasks and soft and absorbent enough to be used for personal wiping. As a single-use wiper, WYPALL\* X60 Cloth Wipers help improve hygiene and reduce the risk of cross-contamination in your workplace.



**Kimtech Prep for WetTask**

KIMTECH\* Wipers are designed for use in the refillable WETTASK\* wiping system. The system is composed of a dry, coreless, centerpull roll and a re-usable bucket. The end-user adds their own chemical solution to create a customised pre-saturated wiper for preparing, cleaning, disinfecting or sanitising surfaces.



**WYPALL Color Code Wipers Regular Duty Single Sheet**

WYPALL\* Colour Coded Wipers are versatile, offering effective and hygienic cleaning. The wipers are ideal for use in areas that require work to prevent the color distinction of cross-contamination. Available in blue, red, yellow, and green.

HARTA BAN INDONESIA, PT

193



Kami mulai merintis bisnis ini sejak tahun 1998, dimulai dengan pemasaran yang masih sederhana untuk tumbuh dan berkembang menuju skala yang lebih besar. Sebagai perusahaan distribusi, kami selalu berdedikasi dalam memberikan layanan terbaik kepada semua pelanggan. Inilah yang selalu menjadi motivasi dan inspirasi dari PT Harta Ban Indonesia untuk dapat terus berinovasi. Selama rentang waktu ini, kami telah melayani banyak kebutuhan ban dan air compressor udara untuk berbagai jenis industri. PT Harta Ban Indonesia kini telah tumbuh menjadi perusahaan distribusi yang dinamis, inovatif, dan berintegritas. Kami juga melakukan ekspansi dengan membuka cabang untuk memfasilitasi kelancaran distribusi produk secara efektif dan efisien ke customer.



**Screw Air Compressor**

Screw Air Compressor Jaguar  
Category Screw, Compressor air system and saving energy  
Start to 10 - 350HP.



**Piston Compressor**

Piston Air Compressor Jaguar  
Category Piston, Compressor Oil Injection  
Start to 1 - 15HP



**Air Dryer**

Air Dryer Jaguar  
Category Piston, Compressor  
Heavy Duty  
Start to 5 - 350HP

*This is only small sample of hundreds of new product which will be on display at the show. It's based on information provided by exhibitors as of 22nd of June, 2022. NOTE: this list is NOT comprehensive. The layout of the buyer's guide is subject to Pamerindo's approval.*



# EXHIBITING COMPANIES

INDOTRADING.COM

112



IndoTrading.com is Largest B2B Marketplace and Supplier Network in Indonesia. We help Distributor, Supplier, Manufacturer in getting more leads from the internet in Indonesia. Indotrading will help your company and get access to project information, tenders and get a free website for your company to sell on the Internet.

### SEO/SEM

We Have Been Helping Hundreds Entrepreneur in Jakarta and All Over Indonesia! We have been helping hundreds of SMEs and large scale entrepreneurs since 2012. With digital marketing methods that have been proven and can be applied until the current pandemic, we can help you increase your turnover during and after the pandemic.

### Create Website

We create websites based on customer requests with a user-friendly and responsive appearance and help your business website to look attractive so that it increases visitor confidence in your company.



### Premium Membership

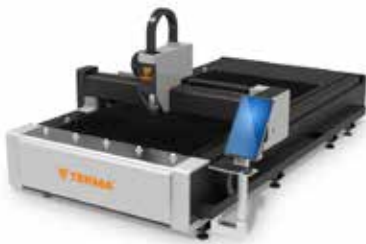
We will help you through Digital Marketing Support which can maximize branding and increase your business turnover. Different from other marketplaces, indotrading offers Integrated Digital Marketing, which is available in all online sectors, not only through websites and marketplaces, but also Search Engine Marketing (SEM), Search Engine Optimization (SEO), Social Media, and so on..

ISOTEMA, PT

615



Established in end of 2013, PT Isotema aims to satisfy the needs of Indonesia's manufacturing sector as a distributor of sheet metal machinery, fabrication machinery, machine tools and other industrial machinery also equipment supports.



### TEKMA TLF-3015EA CNC LASER MACHINE

Integrated fuselage design, greatly saving space. TLF-EA series is an ideal entry level laser cutting machine without high purchase cost and training cost.



### KRRASS WC67K-100T/3200 NC HYDRAULIC PRESS BRAKE MACHINE

The whole EU streamlined design, heat treatment rack, high rigidity worktable, optional mechanical compensation device, to achieve precision bending.

Hydraulic synchronous control and Estun NC programmable logic controller ensure accurate repeatability and ease use.

Integrated hydraulic system (Bosch Rexroth Germany) allows automatically switch to slow bends in a quick way.

X axis and Y axis realize accurate positioning function by frequency converter through NC E21 system programming control.

Cutting-edge frequency response hydraulic control technology, more stable machine tools, more reliable operation.

The best ratio of parameters, optimal core configuration ensure stable performance, more convenient operation.

WC67K standard single-axis back gauge system and single-axis bending angle system, you can choose to add the V-axis compensation function, and select the appropriate mold to bend complex shape workpieces easily.



### DURMA PBF-30120 CNC HYDRAULIC PRESS BRAKE MACHINE

PBF Hydraulic Press Brake has a low investment cost. It is designed to be highly productive and to provide perfect performance / price ratio. It will ensure all solutions for your bending needs. PBF is an easy to use, fast, efficient and ergonomic machine. PBF Hydraulic Press Brake, is an excellent machine for our clients who do not need high stroke and work in three shifts. We support you with low investment costs, and have designed an efficient, precise machine that has minimum maintenance costs. PBF series will serve your company and advance your production standards. PBF Hydraulic Press Brake is a durable, and will be with you for long and productive years. It is designed to provide sensitive solutions at long and deep bending. Moreover, it is suitable for segmented tools and has a fast tool holding system. It is environment friendly, efficient and perfect for bending combinations.

JABABEKA INDUSTRIAL ESTATE

218



JABABEKA & CO.  
Creating New Cities

## JABABEKA INDUSTRIAL ESTATE

The Jababeka Industrial Estate lies in Kota Jababeka, a 5.600 township, which is PT Jababeka Tbk's flagship development, which contains industrial, residential and commercial estates. Covers approximately 1.700 hectares of land area, Jababeka Industrial Estate has become Indonesia's most prestigious address for manufacturing, industry and technology.



### Premium Industrial Land

Premium Industrial Land is available in sizes based on customer's request. These lots are suitable for the construction of tight and medium industry facilities. All our industrial estates are designed to promote industry while at the same time complying with strict environmental guidelines.



### Three in One Building

The total area of New Three in One Building is about 435 m2, specially designed for storage or production workshop area. Electricity, telecommunication network, water and wastewater channels are also supplied. The New 3-in-1 Factory Building has the accessibility that would facilitate efficient production and be conducive for loading and unloading. This new design will provide a maximum flexibility at lowest cost, and would be the best choice for many business entrepreneurs.



### The Smart Manufacturing Hub

The Smart Manufacturing Hub is a factory with larger space, and giving customers the alternative to re-layout as they need (for workshop, warehouse, office, lounge, etc.). This type has fresh looks with a higher specification in finishing material, thus it will look more luxurious. With a wide-opening, high ceiling, and using solar panels, which enables it to be more eco-friendly and less power consumption. It is also supported by high technology and can be known as Smart Eco-Factory.



# EXHIBITING COMPANIES

JIIPE SEZ (JAVA INTEGRATED INDUSTRIAL AND PORT ESTATE)

140



JIIPE is a mega project jointly developed by PT AKR Corporindo and PT Pelindo. The construction of JIIPE began in early 2013 and has been appointed as Indonesia Special Economic Zone (SEZ) by the President of Indonesia in 2021. Until now, JIIPE has brought in 17 tenants such as Bank Indonesia, PT Freeport Indonesia, Rodamas, Unichem Candi Indonesia, Clariant Indonesia, Waskita Beton Precast, Adhixim PCI Indonesia, Nippon Indosari Corporindo (Sari Roti), Pangansari, Fertilizer Inti Technology, Tirta Bahagia, Cahaya Maju Lestari, PT AKR Corporindo, dan Berlian Jasa Terminal Indonesia.

The total area of JIIPE is 3,000 hectares and it consists of industrial estates, deep seaport, and residential area. JIIPE provides superior connectivity with multimodal transportation, connected deep seaport (up to -16 LWS and is the deepest seaport in East Java), one-stop complete utility, environmental permit, and fast construction permit. It has all the utilities needed by any industry, such as power plants, industrial freshwater, waste management, gas supply, and telecommunication networks.

As SEZ, JIIPE also provide additional incentives to investors. The benefits include fiscal incentives such as lower income tax and customs tax, as well as nonfiscal incentives that include 1-door approval and licensing, ease of passage of goods, and flexibility in employment. This makes JIIPE become a major investment destination in Indonesia.



### Industrial Land

Eco-friendly environment of 1761 hectares area, offering complete utilities and amenities. Located strategically to be trading hub and manufacturing center for Indonesia and Asia Pacific. An integrated flood-free complex with lush and green residential estate and the deepest sea port in East Java Province.



the estate resident by having each distinguished district of 7 wonderful districts: West Gate District, East Gate District, CBD District, Distribution Park District, Education District, Golf District and Marina District.



### Deep Seaport

400 ha integrated deep seaport estate strategically located in Madura Strait, With 6200 m of total berth length, sea water depth of jetty : -7.00 LWS; -11.00 LWS; -14.00 LWS,- 16.00 LWS could cater capsized vessel until 100,000 DWT and a part of greater Surabaya port district.

### GEM City Residential

Grand Estate Marina City (GEM City) is a city with a masterplan project covering an area of 800 hectares which is connected to the Industrial area that integrates with one of the deepest and largest port in East Java Province, Indonesia. The best facilities for you, ranging from 2x18 holes golf courses, education town, to the real marina. Started with a vision, GEM City by PT AKR Land is known as a Jewel in the East, emphasizing to balance between living and working, aiming for efficient and better quality of life. This development will enhance the lifestyle of

KYORITSU ELECTRIC INDONESIA, PT

110



As a reference PT. Kyoritsu Electric Indonesia is a subsidiary of Kyoritsu Electric Corporation, which was founded in 1957 and based in Shizuoka, Japan. Our Company is engaged in "Intelligent FA Business" which is defined as a blend of "Factory Automation Technology". The Scope itself, starting from the development, design, manufacturing and sale system that suit the needs of the Company.



### Intelligent AGV (Automation Guide Vehicle)

AGV is a mobile robot that can automatically navigate and transport material from one location to another. Planning, Drawing, installation, maintenance and all support by Kyoritsu.



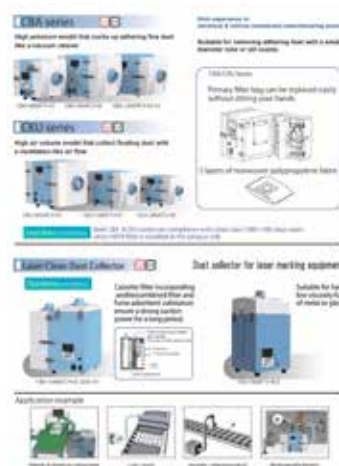
**In-Circuit Tester Focus-2000**

**In-Line Network In-Circuit Tester ALMAX-2000**

**Combination Tester Focus-4000**

### In-Circuit Tester (ICT), Function Tester (FX Series)

In Circuit Tester or also known as Analog in-circuit tester and MDA (Manufacturing Defect Analyzer) are: electrical inspection tools to check for manufacturing defects of components already installed on the PCB



### Dust Collector CHIKO AIRTEC

As a specialized manufacturer of compact dust collectors, CHIKO AIRTEC is dedicated to the development of compact, high-performance products. We offer a wide range of models that come standard equipped with a remote and ethernet communication function in various suction pressure ranges.

# EXHIBITING COMPANIES

LISTRICKITA.COM

201



Distributor Resmi dan bergaransi untuk produk Schneider Electric.

Listricketa.com launching menyambut tahun 2019 dan berada di bawah naungan PT. MEDIANTARA GENERAL SISTEMINDO yang merupakan salah satu Distributor Resmi Schneider Electric sejak tahun 2014. Kami menjamin Keaslian dan Garansi semua Komponen yang kami jual. Listricketa.com adalah satu-satunya E-commerce resmi dari PT. MEDIANTARA GENERAL SISTEMINDO.



MADE-IN-CHINA.COM

1106



Established in 1998, Made-in-China.com is developed and operated by Focus Technology Co., Ltd. Being a comprehensive service platform for foreign trade, Made-in-China.com is committed to tapping business opportunities for Chinese suppliers and overseas buyers, and providing one-stop services for promoting the international trade between the two sides. Made-in-China.com now has become an important bridge for Chinese foreign trade enterprises to enter the international market and an important network channel for overseas buyers to purchase Chinese products. Our online directory contains more than 40,000,000 product listings of reliable, highly specialized and qualified Chinese suppliers.

For the purpose of "Promoting Made in China, Serving SMEs, Boosting Global Trade" all the time, Made-in-China.com has deeply engaged in the field of international trade and has been highly recognized by the market by winning various awards for many years in a row such as "The Most Commercial Valuable E-commerce Website in China", "Influential Website in Domestic B2B Industry", "Chinese Best Enterprise in Cross-border E-commerce Industry" and so on.

On the basis of information display service, Made-in-China.com also provides precision marketing promotion, online translation via TradeMessenger—a live chat application developed by Made-in-China.com, online transaction and payment, logistics declaration, financing and tax refund, professional training and other full link foreign trade services for our member enterprises to enable them to expand the international market and obtain trade opportunities.

MEDIA PNEUMATIC, PT

132B



PT Media Pneumatic was established in November 2008, provides a wide range of Pneumatic products and Lubrication System products.

We are committed to provide genuine goods with good quality and the best service to all customer, competitive price and short delivery times also very important to our company.

Being the leading company in the supply of Pneumatic products and Lubrication products, both in term of good quality, price, prompt delivery time and best after sales services to the customer.



### Air Pneumatic Cylinder

Brand CKD & EMC  
Best Seller Air Cylinder.  
Type:  
CKD - CAC4, SCA2, SCG, SCWP2.  
EMC - TBC, LBC, FVBC

### Air Motor Globe

Globe has a wide program of motors. All standard motors are in stock. Order your motor now. Manufacturer of Standard and Custom Build Air Motors since 1986. Order Your Motor Here! ISO 9001:2015. ATEX Certified. Custom build possible. Available from Stock. Wide Program.

### Lubricant System

Manual Oil/Grease Pump, Electric Oil/Grease Pump  
Lubrication pumps feed lubricant from the lubricant reservoir into the tubing system of the automatic centralized lubrication system. The manometric pressure has to be high enough to compensate for pressure drops in the tubing, components (filters, valves, distributors) and friction points.

# EXHIBITING COMPANIES

METRIX INSPIRA, PT

1018



PT Metrix Inspira established officially 2007 as an industrial automation company not only provide machinery but transport system such as conveyor, design, engineering services, SPM (Special Purposes Machinery) as solution.



#### Zanasi Z4700

Z4700 is based on innovative management software on a stable and flexible operating system, with 10.1" color touchscreen. A new coding experience with customizable user interface for each operator through language, keyboard and activities (multilevel login). A graphic editor with simple and intuitive icons and stretch and drag & drop functions.



#### MINEBEA INTEC METAL DETECTOR VISTUS C

Vistus® metal detectors for optimum consumer protection Vistus® metal detectors are capable of detecting both ferrous and non-ferrous metals and are specifically designed for the food industry. They are available with a rectangular opening for use on conveyor belts and with a round opening for use on pipes. All Vistus® detectors feature:

- Multi-frequency technology offering premium detection performance
- Fast and easy switching between product batches via extensive product memory
- Via the automatic learn-function, products can be set up or adjusted fast and errorfree by line operators without requiring special training or knowledge and without the involvement of an engineer
- Access protection via user individual passwords or finger print authentication avoiding unauthorized system changes
- A wide variety of available interfaces allows an easy integration into data networks



#### Dataman 360 Series Image-Based Barcode Readers

When high-performance, flexibility and ease of use are essential for your ID Code reading application, the DataMan® 360 series delivers. The DataMan 360 series reads a wide range of 1-D linear and 2-D matrix symbologies. Powerful ImageMax technology with a high powered liquid lens and a high-powered illumination enhances image formation and maximizes read rates for even the most challenging dot-peen or laser marked DPM codes.

MITSUBISHI ELECTRIC INDONESIA, PT

902



We, the Mitsubishi Electric Group, will contribute to the realization of a vibrant and sustainable society through continuous technological innovation and ceaseless creativity, as a leader in the manufacture and sales of electric and electronic equipment used in Energy and Electric Systems, Industrial Automation, Information and Communication Systems, Electronic Devices and Home Appliances.



#### Robot MELFA FR Series

Robot MELFA FR Series is an industrial robot from Mitsubishi Electric that has many features. "Next-generation intelligent functions" make it simple to carry out work that has always defied automation. "Safe, collaborative work applications" allow robots and people to work together with high levels of safety. "FA-IT integration functions" support next-generation manufacturing. With these 3 key features, the FR Series is capable of handling virtually all your automation needs. Mitsubishi Electric also provides a wide range of products and solutions that could support our customers in the manufacturing industries to the next level.



#### Computerized Numerical Control (CNC) M8V Series

The all new M800V/M80V CNC Series, keeping abreast of manufacturers' needs and the advancement of the times, will optimize manufacturing in a smarter way from the perspective of 'things' and 'time'. Industry-first built-in wireless LAN, which allows an operator to manage machining at a distance, high-definition 3D machining simulation, which minimizes trial cutting, and advanced user-friendly and intuitive operation will streamline overall manufacturing processes and unlock 'time' that has been unnoticed so far.



#### Wire-cut EDM System - MV1200S Series

Mitsubishi Electric EDMs make works easier for both first timer and long-time users when handling complicated shapes. Mitsubishi Electric also helps to enhance productivity with total solutions covering machine, power supply, adaptive control, automation systems and networks. Standard model pursuing a cost performance machining system 1] Opening the door to IoT New type control unit "D-CUBES", 2] Innovative Automatic Wire Threading -Intelligent AT-, 3] Machining Accuracy -Opt. Drive System, 4] Productivity -Precise Finish Circuit-, 5] Easy Operation -Natural User Interface-, 6] Energy Savings, Low Running Cost -Long Life System- Consideration for the environment and cost reduction.

NAGASE IMPOR-EKSPOR INDONESIA, PT (JETRO)

1102



PT. Nagase Impor Ekspor Indonesia is a subsidiary company of Nagase & Co., Ltd. which is based in Japan. We at PT. Nagase Impor Ekspor Indonesia provide a trading service between countries starting from raw materials up until finished goods. We are expanding our business to follow the world trend into a digitalized industry. With support from Murata Manufacturing Co., Ltd. we are providing a smart factory automation tools to support Indonesia heading for Industry 4.0



#### Wireless Vibration Sensor

Murata Wireless Vibration sensor give you the ability to monitor your machine condition without the hassle to do daily checking on the machine it self. Supported by a wireless gateway that can connect with up to 50 sensors, it can cover a wide range of 100-200 m radius that can be integrated with the existing intranet in the company as well.

A software is also provided to support to manage the sensors and view the graphs and data of the sensors readings.





PT. NDT Instruments Indonesia establish on 28 April 2008 at Jakarta. This company has been operated for more than 10 years in the form of representative for NDT Instruments. Ltd. Singapore.

NDT Instruments Pte. Ltd, Singapore is Institute Dr. Foerster GmbH & Co.KG, Germany subsidiary whereas for our branch were locate in Malaysia, Thailand, Singapore, Vietnam and Philippines.

We also recognize the importance of constantly providing excellent customer service to our respected customers. Our direction is to consistently achieve customer satisfaction by providing quality products and excellent service at competitive price to our customers.



### CARESTREAM NDT INDUSTREX HPX-PRO DIGITAL SYSTEM

The INDUSTREX HPX-PRO Digital System is built for extreme portability into rugged imaging environments and improved productivity in field imaging applications. This CR system is a lightweight, portable imaging solution that is quick to deploy and rapidly produces high-quality images.



### FOERSTER Electromagnetic Testing of Components

Automotive components are exposed to very high loads such as high temperatures or friction. Even the smallest cracks in the material or incorrect material properties can lead to total failure. Their functionality can only be guaranteed by a reliable crack and structure testing of the respective components. The eddy current method according to DIN EN ISO 15549 is a non-destructive and contactless method for material testing of electrically conductive materials. It enables a 100 % inspection in automated systems that achieve high throughput speeds. Due to the large number of components and their complexity, the testing solutions are usually customized. This happens in close cooperation with the customers. In order to check feasibility, free application tests are first carried out in the in-house application laboratory.



### INFRARED & THERMAL TESTING

Infrared and thermal testing refers to the non-destructive testing of parts, materials or system through the imaging of the thermal patterns at the object's surface.



### ELECTROMAGNETIC TESTING

Electromagnetic testing uses electromagnetic induction to detect flaws in conductive materials.



### UTILITYSCAN PRO

The UtilityScan® Pro is GSSI's premium utility locating system, offering users modularity within one scanning system. The UtilityScan Pro system provides a non-destructive means to accurately locate metallic and non-metallic underground utilities.



PT. Neoduta Centra Hydraulic Indonesia is your strategic working partner who was established with working spirits and innovative idea in hydraulic fields. Starting from 2018, our team consists of professionals who are competent, highly dedicated, oriented in problem solving and experienced on their fields. We are proudly announced to be NACHI Hydraulic product dealer and stockiest, who has vision to be the best hydraulic component distributor in Indonesia.

Our missions are:

1. Distribute product to our customers with short delivery time.
2. Customer's trust and satisfaction is our passion.
3. To be your problem-solving partner in Hydraulic System.



### Nachi

Along with constantly improving performance, industrial machines continue to become increasingly sophisticated. Hydraulic equipment has to meet the challenge of diversifying needs.

You may already appreciate the Nachi-Fujikoshi reputation for compact equipment that delivers energy efficiency, safety, and high performance.



As a system provider of innovative drive solutions with competence in more than 100 industries, we provide you with flexible service of the highest quality. NORD has 48 subsidiaries in 36 countries and further sales partners in more than 50 countries. They provide on-site consulting, assembly centres, technical support and customer services.



### NORD INDUSTRIAL GEAR UNIT

Industrial gear units are available as helical gear units or bevel gear units. They are constructed with the UNICASE housing which was developed by us and can accommodate large roller bearings, which guarantee a long service life. By the way: NORD is the industrial gear unit manufacturer with the world's largest industrial gear units in a UNICASE housing.



### NORD GEARED MOTOR

Motors with a helical gear unit from NORD have a high power density and a large number of options. The gear units are produced in three series and many sizes for a wide range of applications.



### NORD FREQUENCY INVERTERS

The NORDAC PRO is the inverter for all drive applications. It offers a wide power range, and its functionality can be extended with plug-in option modules. For this inverter, variable cooling concepts are used to remove heat, which enable removal of heat outside of the control cabinet and can be simply adapted to the requirements of the application with various option modules.



# EXHIBITING COMPANIES

OTANO MULTI MESINDO, PT

802A



LASER CUTTING MACHINE, CNC TURRET PUNCH CNC PRESS BRAKE CNC SHEARING MACHINE, CNC/NC WIRE AND TUBE BENDING, CIRCULAR AND BANDSAWING MACHINE



OTOMASI BERSAMA INDONESIA, PT

330



Company's products and services  
PT. Otomasi Bersama Indonesia is special in CNC Retrofit & Automation machine design & builder.  
We're also distributing CNC Controller, Servo & inverter drive, Ballscrew & linear guide, rotary 4-5th axis etc.



**Syntec Controller**  
CnC & Automation Controller, servo drive, motor & spindle



**Leantec Robot**  
Robotic arm. Elfin can be applied in many different kinds of applications as long as you can imagine. Applied for integrated automatic production line, assembly, pickup, welding, etc.



**HsuPen Rotary**  
High precision rotary table for 4 and 5 axis upgrade

PAMY SURABAYA

187



Pneumatik menggunakan hukum-hukum aeromekanika, yang menentukan keadaan keseimbangan gas dan uap (khususnya udara atmosfer) dengan adanya gaya-gaya luar (aerostatika) dan teori aliran (aerodinamika). Pneumatik dalam pelaksanaan teknik udara mampat dalam industri merupakan ilmu pengetahuan dari semua proses mekanik dimana udara memindahkan suatu gaya atau gerakan. Jadi pneumatik meliputi semua komponen mesin atau peralatan, dalam mana terjadi proses-proses pneumatik.



**AIR CYLINDER PNEUMATIC MSC**  
Cylinder pneumatik adalah aktuator atau perangkat mekanis yang menggunakan kekuatan udara bertekanan (udara yang terkompresi) untuk menghasilkan kekuatan dalam gerakan bolak-balik piston secara linier (gerakan keluar-masuk).



**SOLENOID VALVE 2W**  
Solenoid valve adalah katup yang digerakan oleh energi listrik, mempunyai kumparan sebagai penggerak yang berfungsi untuk menggerakkan piston yang dapat digerakan oleh arus AC maupun DC, solenoid valve atau katup (valve) solenoid mempunyai lubang keluaran, lubang masukan dan lubang exhaust.



**SOLENOID VALVE 5/2**  
Solenoid valve pneumatic adalah katup yang digerakan oleh energi listrik, mempunyai kumparan sebagai penggerak yang berfungsi untuk menggerakkan plunger yang dapat digerakan oleh arus AC maupun DC.

PANDU HYDRO PNEUMATICS, PT

132A



Established on 2002. PT Pandu Hydro Pneumatics has become one of the largest hydraulic component stockiest and customized hydraulic system fabricated in the country. By providing a wide range of product to cover all of your hydraulic needs, makes us your reliable partner for your hydraulic solutions both industrial and mobile applications.



**Nachi**  
Hydraulic equipment for industrial machines that delivers energy efficiency, safety, and high performance.



**Osaka Jack**  
Hydraulic Jack and Journal Jack



**Danfoss**  
Discover Danfoss marine solutions and optimize performance and efficiency for offshore vessels serving oil and gas production and fishery industries.

# EXHIBITING COMPANIES

PANDULIMA JAYATEHNIK, PT

816



Established in 1986, PT Pandulima Jaya Teknik is a hydraulic and pneumatic component manufacturing company committed to providing the best to customers. PT Pandulima Jaya Teknik is authorized distributorship of CKD, Sang-A, Chelic, Samho, Parker-FCG, Yuken, DOW Valve, Voss, Galtech, and Pister. PT Pandulima Jaya Teknik also provides custom engineering to cater for industries individual requirements. Our dedicated staff will provide you with the best service and customer satisfaction is guaranteed.



### Yuken

In 40 years, YUKEN went from an auto repair shop to a publicly traded company. Since then YUKEN has continued to expand its line of hydraulic products as well as certain types of machinery dependent on hydraulic power.



### CKD

CKD as a Japanese company has been a pioneer in pneumatic automation and anticipating changes in times. Drawing on CKD unique cutting edge technology, CKD is committed to providing the technical solutions and contributing to manufacturing advantage around the world.



### Legris

The Legris product range encompasses a wide variety of pneumatic products, ranging from fittings and valves to Transair tube and shop systems.

PER HAMAREN TECHNOLOGY INDONESIA, PT (JETRO)

1102



Perencanaan dan pengembangan website, sistem dan aplikasi, Perencanaan dan pengembangan sistem AI/ IoT, desain Grafis.



LuxPro

### LuxPro

Situs informasi properti untuk kalangan atas di Indonesia.



### Namakanji

Pengubah nama Indonesia menjadi kanji Jepang

PERDANA TEKNIK MANDIRI, PT

517



PT Perdana Teknik Mandiri was established in 2003, used as a Trading Company. On June 29, 2006, changed to PT Perdana Teknik Mandiri.

PT Perdana Teknik Mandiri is a company that distributes and supplies materials for hydraulic and pneumatic cylinders, especially for the Oil and Gas Industry, Mining, Playwoods, Manufacturing Industry, Automation Industry, and Heavy Equipment Industry, etc.



### HYDRAULIC & PNEUMATIC CYLINDER TUBE

Hydraulic & Pneumatic Cylinder Tube  
Honing Hydraulic Tube Distributor  
Since 2003 we have been a distributor of Hydraulic Honed Tube, Stainless Tube and Aluminum Pneumatic Tube offering Profile Tube and Honing Pipes with the best quality. Made of durable material, this Cylinder Tube provides the ideal solution for you Honed Tube Requirements.

Material :  
JIS G3445 STKM13C for Hollow Bar  
JIS STKM 13C/ DIN ST 52/ ASTM A106/ SAE 1020 and welded tube: DIN ST 52.3 are provided for Honed Tube  
DIN 1630 ST37.4/ NF TU37b (TUE220b) / JIS STPT370 (STS38) / ISO TS4 for Seamless Carbon Steel  
6063-T5/ BS HE9 (6061) / JIS A6063PD (A6063TD) for Aluminium Tube  
SUS304 for Stainless Steel



### Hydraulic & Pneumatic Cylinder Rod

Cylinder Rod is one of our main products, featuring its high quality and excellent performance.

We provide all kinds of Cylinder Rods, such as Pneumatic Cylinder Rod, Stainless Steel Alloy Chromium Plated Rod and Harden Chrome Plated Cylinder Rod, all with high quality.

Material :  
- SAE1045 (S45C) HRC 54  
- CF 53 HRC 60  
- SUJ 2 HRC 62  
- SUS304 for Stainless  
Pneumatic/Hydraulic Cylinder shaft, Cdumh, Plastic injection machines, Fitness equipment and Automachine, Precision shaft.



### PNEUMATIC CYLINDER & PART

Pneumatic Cylinder Products and Spare Part for Jufan, Shako and Winner.

# EXHIBITING COMPANIES

PERTAMINA LUBRICANTS, PT

220



PT Pertamina Lubricants (PTPL) is a subsidiary of PT Pertamina Patra Niaga (PT PPN), Sub Holding Commercial & Trading PT Pertamina (Persero) which was established on September 23, 2013 and received a spin-off from the Lubricants Business Unit of PT Pertamina (Persero), on October 30, 2013.



### TURALIK SERIES

Hydraulic oils formulated from high quality base oil and selected additive. It is designed to provide protection from excessive wear, rust and corrosion and maintain system cleanliness from sludge and deposit.

Pelumas hidrolik yang diformulasikan dari base oil berkualitas tinggi dan aditif pilihan. Pelumas ini didesain untuk melindungi sistem hidrolik dari keausan yang berlebihan, karat dan korosi, serta menjaga kebersihan sistem hidrolik dari sludge dan deposit.



### MEDITRAN SX PLUS SAE 15W-40

A high performance heavy duty diesel engine oil especially formulated for the modern heavy duty diesel engine using EGR (Exhaust Gas Recirculation) technology.

Pelumas mesin diesel tugas berat berkinerja tinggi yang diformulasikan secara khusus untuk mesin-mesin diesel modern tugas berat yang menggunakan teknologi EGR (Exhaust Gas Recirculation).



### MAXCOOL NC

High performance neat cutting oils formulated from high quality base oil and non chlorinated extreme pressure additive and corrosion inhibitor.

Pelumas neat cutting berkinerja tinggi yang diformulasikan dari base oil berkualitas tinggi dan aditif extreme pressure non chlorinated dan corrosion inhibitor.

POLITEKNIK ATMI SURAKARTA

320



Our polytechnic (ATMI Surakarta) for technical and engineering dates back to the year 1968, when the founders of modern-day Switzerland created it as a centre of innovation and knowledge.

Like the sound of studying and researching close to Surakarta's old town? ATMI Polytechnic's two sites enjoy prominent locations and are easily accessible by public transport. Both have excellent infrastructure to support effective teaching and research, as well as inviting leisure facilities. They are also open to guests and visitors.

ATMI Polytechnic's two main locations are situated in the centre of Surakarta. Both offer a full range of services around teaching.



BIONIC ARM



LASER ENGRAVING



ROUTER MACHINE

QUALITECH INDOPRIMA, PT

144



Prona air tool Manufacturing limited was established in the 1980's of Taiwan. Prona is a company that specialized in high-end product advanced machinery and equipments, precise processing technique. Prona factory is currently located in Fo shan, guang Dong with 67890 m2 of total area and is a sole foreign-invested company.

Prona never prides it self on present achievement, but always keep improving on the current products and technique and continue to develop new product.



**PRONA**  
WORLD SPRAY GUN EXPERT



**ROXGEN**  
THE RIGHT TOOL FOR YOUR PRECISION PAINTING



# EXHIBITING COMPANIES

RADIANT JAYA BERSAMA, PT

401B



RJB is the main distributor of Nittokohki products. Brand Nittokohki comes from Japan. Nittokohki has several product items including Couplers (Connectors), Power Tools (Chamfering, Grinding, Sanding, Filing, Cutting, etc.), Machine Tools (Bor machine and puncher machine include with Broach), Electric screwdriver delvo (a tool used to tighten bolts, thereby simplifying the production process), Medo Blowers (Blowers that can be applied to fish ponds, for aerobic sewage treatment .The benefit of Nittokohki are: all the spareparts are available, after service provided & the quality is no doubt.

## Electric Screwdriver Delvo

Model DLV480C Series



### Electric Screwdriver Delvo

An electric screwdriver that is used for screwing bolts / mounting bolts with precision.

## Cupla

H-Cupla



### Cupla

Connections/disconnections of various pipings such as air,water,oil and gas.

## Power Tools & Machine Tools



### Power Tools and Machine Tools

Tools used for drilling, perforating, turning, grinding, filing and cleaning burrs.

RIASARANA ELECTRINDO, PT

138



With more than 30 years of experience in the Electrical Trading & Automation Solution such as Electrical Control, Industrial Automation Product & Services, Power Distribution & DC Power Supply System.



### MEAN WELL

AC/DC Power Switching Power Supply, DC/DC Converters, DC/AC Converters, LED Dimming power Supply, LED Constant Current Power Supply & Battery Chargers.



### Drives & Wiring Accessories

PT. Riasarana Electrindo have been appointed by : ABB, Hitachi, Mico, INVT, & other big world brands.

Variable Speed Drives, Induction Motor, Motor Controller, Laser Maker, Lettering Machines.



### Industrial Automations Solutions

PT. Riasarana Electrindo have been appointed by : Panasonic, Weintek, Shimpo & other big world brands for automations solutions.

Programmable Logic Control, Industrial Touch Panel, Servo Drive, Motor Servo, Laser Maker & Sensor.

RINCO ULTRASONICS (M) Sdn Bhd

915A



RINCO ULTRASONICS is one of the world's leading companies in the fields of ultrasonic welding and ultrasonic cutting. Ultrasonic technology makes it possible to achieve virtually perfect welding and cutting results while also guaranteeing cost-effectiveness and sustainability. The precision of ultrasonic welding and cutting is highly valued across a range of different sectors: the automotive, food processing, medical technology and textile industries all rely on the perfection delivered by ultrasonic technology. Ultrasonic welding is the most efficient way of bonding plasters in a reliable and permanent manner. It ensures precision and reproducibility when processing the thermoplastics that are to be joined together. Ultrasonic cutting enables efficient and hygienic food processing. The food products do not lose their shape and no residues are left on the blade. Synthetic textiles can be processed quickly with minimal dust. A clean cut is achieved without any fraying, as the ultrasonic technology seals the edges during the cutting process. The use of ultrasound enables clean, economical and sustainable processes which promote cost-effectiveness without impairing the quality of the product. RINCO ULTRASONICS has over 130 employees and representatives in more than 40 countries, all of whom understand the market and the requirements that high-quality plastic products need to fulfil.



### Press Standard 3000

The ultrasonic welding machines in the Standard series with pneumatic drive are ideal for welding, cutting and punching thermoplastic moulded parts, non-wovens and textiles as well as films, or for embedding metals in plastic. Standard models can be used for high-precision machining of parts made from plastic with designs of average complexity. With an adjustable travel measurement of 0.01 mm, these machines work very precisely and achieve accurate welding results. The option to store up to 32 parameter data sets ensures repeatability. Multi-level user administration controls permission to make changes to welding parameters, thereby increasing process reliability in operation.



### Press Electrical Motion 20 (Safeballs)

The Electrical Motion series is ideal for welding, cutting and punching thermoplastics, non-wovens and textiles. Thanks to the electric drive, the controller is extremely precise, allowing the best possible welding results. In addition to the 8 welding modes, a trigger can be set to initiate the ultrasound.



### Ecoline-Set with Hand Gun HG35-EC

The Ecoline generator is our lightest and easiest to operate generator. It is used to operate ultrasonic hand units. Thanks to the plug-and-play functionality, the generator is ready for operation immediately. In test mode, the right amplitude level can be found initially; the setting is then saved and the unit switches to operation mode. Status and power LEDs indicate the status of the hand unit and the amount of power being used at the time during operation. The ultrasonic hand welding unit HG35-EC is suitable for manual welding and cutting operations from small to medium size.

This is only small sample of hundreds of new product which will be on display at the show. It's based on information provided by exhibitors as of 22nd of June, 2022. NOTE: this list is NOT comprehensive. The layout of the buyer's guide is subject to Pamerindo's approval.

# EXHIBITING COMPANIES

RIYADI PUTRA MAKMUR, PT

401A



From simple shop in 1989, PT Riyadi Putra Makmur has grown to become the sole agent and distributor of various leading international brands. Integrity and reliability are the main values of our company as a world-class sole agent and distributor. Having a head office in Jakarta, we continue to grow by opening branch offices and developing sales networks throughout the archipelago. We also provide a comprehensive Support and after sales services For our customers to ensure our customers satisfaction.



**ASADA, JS CLAMP, TONE**  
ASADA (THEARDING & CUTTING MACHINES). TONE (TOOLS KIT & POWER TOOLS). JS CLAMP (TOGGLE CLAMP).



**MAKISHINKO**  
BEVEL GEARBOX, GEARBOX MA SERIES, GEARBOX S SERIES, SCREW JACK, GEARED MOTOR.



**BAUER**  
BAUER's Breathing Air Compressor Systems are the gold standard for firefighting, diving, military, offshore, industrial and medical applications where reliable ultra-pure breathing air is required to maintain life safety. Each product within our breathing air portfolio is specifically designed for the end user application ranging from small mobile systems to very large stationary systems operating in fire stations, mobile vehicles, dive operations, shipboard, offshore platforms, industrial plants, etc. Our systems can fit any need from 2.9 scfm charge rate up to 145 scfm charge rate (per compressor system) with fill pressures up to 6000 psig. Our Containment SCBA/SCUBA fill stations are built to exceed the current NFPA standards and including independent certification by a third party laboratory.

RIYADI WARWICK INDONESIA, PT

401C



Doosan Robotics is a leading manufacturer of collaborative robots (cobots), which are robots designed to work side by side with humans without fences, allowing human workers and robots to perform their tasks in the most efficient way, and thus increasing productivity.

Launched by Doosan Group, Korea's oldest and most prominent conglomerate, Doosan Robotics was founded in 2015 with its head office in South Korea. Since then, Doosan Robotics has been developing its cobot system based on its own technology, incorporating the professional knowledge of the industry's leading researchers.

Doosan Robotics is firmly committed to establishing a leading position in the market through its continuous R&D efforts, spearheading the growth of the industry.



**Doosan Robotics**  
"Doosan Robotics is collaborative robots (cobots), which are robots designed to work side by side with humans without fences, allowing human workers and robots to perform their tasks in the most efficient way, and thus increasing productivity. Doosan robots are capable of world-class performances, demonstrated by a working radius of 900 to 1,700 millimeters, a load capacity of 5 to 25 kilograms, and sensitive collision detection sensors that ensure the safety of nearby workers. They are equipped with their own torque sensors on all six-joints, providing the industry's best collision sensitivity and carrying out more highly sophisticated tasks that previously required the dexterity of human hands."



**OnRobot**  
"OnRobot brings together technical expertise and key innovations from technological leaders in the robotics industry OnRobot's suite of intelligent accessories lower the barrier to automation for businesses of every size and industry The OnRobot product range features a wide assortment of tools and software for collaborative applications, including electric, vacuum and magnetic grippers, the award-winning Gecko gripping technology, force/torque sensors, a 2.5D vision system, screwdriver, sander kits and tool changers. Supported by the free, Learn OnRobot e-learning platform, OnRobot makes it easy to deploy collaborative automation on tasks such as packaging, quality control, materials handling, machine tending, assembly, and surface finishing regardless of skill level or previous robotics experience."



**Doosan CNC Machine**  
Since the development of NC lathes in 1980, Doosan Machine Tools has become a leading company in the global machine tool industry by concentrating on the growing export market, continuously developing new products, establishing a global network and building a strong brand. By providing precision machining technologies to high value industries such as automotive, aerospace and IT, it has helped companies operating in the sectors become more competitive and successful.

SARANA MENTARI CEMERLANG, PT

408



Our company established since 1991 as a main dealer for SMC Pneumatic products for East Indonesia area. Through our long experiences, we are not only selling pneumatic products but also providing total solution and support for all your pneumatic needs. Our commitment is to give our customers best services, information of our latest technology in automation and to listen what customers need. together we grow better.



**Pneumatic part**  
all your pneumatic parts from fitting, tubing, filter, dryer, actuator, valve, electric actuator, chiller, ionizer, etc

# EXHIBITING COMPANIES

SBU JPP PUPUK KALTIM

139



SBU JPP (Jasa Pelayanan Pabrik) was a maintenance division at Pupuk Kalimantan Timur, we're exist since 1989 as workshop to support reliability maintenance. By the time we expand to assist external plant in our area. In early 2021 we change to SBU (strategic business unit), we have big plan to be PT in PIHC (Pupuk Indonesia Holding Company Group) as a maintenance & operation services.



## AXLE BOX

## MECH SEAL

Mechanical seal parts that sparate by 2 option, fully assembly & disassembly.

## LABYRINTH

Labyrinth parts that usually in rotating equipment such as rotor & fan.

SINAR CITA ABADI, PT

416



PT. SINAR CITA ABADI

PT. SINAR CITA ABADI is a company engaged in trading that serves other companies and consumers directly. Established in 2019 and located at Soho Skyloft Ciputra World Unit 2208, Surabaya.

Our main product is helicopter fans that use quality materials and the latest technology that makes these fans lightweight, maintenance free, energy efficient, waterproof and dustproof, very quiet and can be adjusted using a smartphone. This fan uses a combination of helicopter fan technology and High Volume, Low Speed makes this fan more efficient in energy use.



## Helicopter Fans

Helicopter fans that quality materials and the latest technology that makes these fans lightweight, maintenance free, energy efficient, waterproof and dustproof, very quiet and can be adjusted using a smartphone. This fan uses a combination of helicopter fan technology and High Volume, Low Speed makes this fan more efficient in energy use.

STECHOQ ROBOTIKA INDONESIA

918



Stechoq is an R&D company that focuses on developing product innovations for robotics and industry 4.0 technology, founded in 2015 by outstanding millennials who have won dozens of achievements in the field of robotics at home and abroad. Stechoq has succeeded and will continue to develop appropriate innovation products for the progress of Indonesia.



## Digital Control System (DCS)

Control and monitor the productivity of a machine in real time, then send the data to a server that can be accessed through web-based applications and dashboards.



## VENINDO

Flows air and O2 into the patient's lungs and helps exhalation of air (expiration) and maintains fluid parameters (measured pressure) according to patient needs.

SURABAYA INDUSTRIAL ESTATE RUNGKUT, PT (PT SIER)

1022



Surabaya Industrial Estate Rungkut (SIER) is one of the state owned companies which was established on February 28, 1974 in Surabaya to support and develop industrial areas in Indonesia, mainly in East Java.

As one of the best, largest and more than 40 years of experience, SIER is developed based on the well-designed master plan to meet the real industrial and environmental needs and managed professionally to enhance the efficiency of productivity.



## INDUSTRIAL LAND

From 563 Ha of land owned by PIER, the 70% is allocated as industrial land, it makes PIER very ideal and large enough for the flexibility of business necessities. The land user will get a Building Rights Title certificate for 30 years which could be extended.



## STANDART FACTORY BUILDING

Standard Factory Building (SFB) is provided with a rental system with various sizes range from 600 M2 to 1.800 M2 which are completely facilitated with the following:

- Electricity supply/PLN powers 23 KVA and 41 KVA
- Fresh water supply from PDAM
- 2 connected phone number
- Standard contract : 2 year (extendable)
- Deposit guaranty : 4 month rentals that will be returned without interest by the end of the rent.



## SMALL SCALE INDUSTRY PLACE

Small Scale Industry Place (SUIK) is provided with a rental system with various sizes range from 36 M2 to 350 M2 which are completely facilitated with the following:

- Electricity supply/PLN powers 6.6 KVA and 23 KVA
- Fresh water supply from PDAM
- 2 connected phone number
- Standard contract : 2 year (extendable)
- Deposit guaranty : 4 month rentals that will be returned without interest by the end of the rent.



# EXHIBITING COMPANIES

SURYA TEKNIK ABADI, PT

1031



PT. Surya Teknik Abadi is a company founded on 26 November 2012, we specialize in selling Material Handling Equipment for your logistical needs. our products are environmentally friendly as our company has a go green concept, with most of our products being either manually powered or electrically powered. we believe that customer satisfaction as priority, thus we will provide the best service for all of our customer.



### Reach truck

A reach truck is typically used to lift objects up to 10 meters in height. In addition to lifting objects, reach trucks have features such as cameras and side shifters.



### Hand pallet- lithium battery

The hand pallet electric lithium battery is a rechargeable hand pallet that charges quickly, taking only about 2 hours to fully charge. This hand pallet has the ability to transport materials weighing up to 2 tons.



### Hand pallet- full electric

A hand pallet full electric is a device used to transport items weighing up to 3 tons from one location to another. This hand pallet is already equipped with a liquid battery and a charger.

TAESIN INDONESIA, PT

318



We offer our customers innovative and high quality laser systems and technologies, specializing in welding, cutting, marking and engraving. Our customers include traditional wooden, acrylic and metal cutting or engraving industries.

We provide solutions to customers' problems and difficulties and aim to create a more efficient or innovative solutions. Above all, we pride ourselves in providing excellent service by providing continuous technical support throughout the lifetime of our machines.



**FIBER LASER CUTTING MACHINE TCM 1530**  
For cutting metal materials.



**CNC ROUTER MACHINE TLD56**  
Widely used in woodworking industry, stone industry, advertising industry, artwork or decoration industry, electronic industry, mold industry and music industry, etc.



**CO2 LASER CUTTING MACHINE TAN 1309**  
For cutting non metal materials.

TAIWAN EXTERNAL TRADE DEVELOPMENT COUNCIL (TAITRA)

907



Founded in 1970, TAITRA is Taiwan's foremost nonprofit trade promoting organization. Sponsored by the government and industry organizations, TAITRA assists enterprises to expand their global reach. Headquartered in Taipei, TAITRA has a team of 1,300 specialists and operates 5 local offices in Taoyuan, Hsinchu, Taichung, Tainan and Kaohsiung as well as 59 branches worldwide. Together with Taipei World Trade Center (TWTC) and Taiwan Trade Center (TTC), TAITRA has formed a global network dedicated to promoting world trade.

TAKAMAZ INDONESIA, PT

718



Takamaz is one of leading CNC Lathe Manufacturing. With head quarter in Ishikawa prefecture Japan, and established more than 70 years. In Indonesia as a branch, we provide the best solutions and work very closely with customers to ensure the customers to get the highest quality product with reasonable price, and after sales service such as technical advice and maintenance.



**Takamaz GSL-15 Plus**  
This is a TAKAMAZ standard that has evolved for single lathes. simple machine that focuses on cost performance as well as ease of use.



**Takamaz XT-6**  
CNC 1 SPINDLE 1 TURRET, with loader FC60 for Loading system selection according to user specifications. can support for Tail stock.

PRECISION LATHE The TAKAMAZ flagship further evolved.

TOCHU THAILAND CO., LTD

185



Firmly positioned as a pioneer in the shot blasting industry, Tochu Thailand Co., Ltd. is the most experienced company within Thailand and South East Asia. Having placed a strong emphasis on developing our products for over 40 years, we are now a technology leader in our field. This has resulted in improvement of various critical aspects of the machines, such as increasing the efficiency of blast wheels and workpiece handling systems.



### TRH Rotary Hanger Shot Blasting Machine

This 2-Hanger Rotary Type Shot Blasting Machine Type TRH is the preferred choice for customers that need to blast cast iron and aluminum castings. The workpieces can be conveniently loaded and unloaded by placing them on the hanger in the front section of the machine, while at the same time the other batch of workpieces are cleaned in the blasting area. Due to the fact that they are placed on hangers, damage to delicate workpieces will be prevented making this kind of machine the most suitable solution for the treatment of automobile and die-casting components.



### TC-312DM Tumbblast Shot Blasting Machine

These Tochu Small Tumbblast Shot Blasting Machines are suitable for customers looking for an economical way to clean smaller automotive workpieces, roughen the surface prior to rubber coating or to achieve a cosmetic surface finish for die-casting components. The capability to blast even the smallest workpieces, e.g. screws and nuts, make this product range one of our most popular to date.



### TRP Rotary Table Shot Blasting Machine

The Tochu Rotary Table Shot Blasting Machine Type TRP is extremely versatile and can be used for cleaning castings, scale and rust removal, burr removal and the removal of residue after welding. Workpieces can be roughened or matted and coatings can also be removed. Due to the strategic location of the blast wheels, workpieces of different and complex shapes can also be processed.

TOKOKOSEN INDONESIA, PT (JETRO)

1102



PT. Tokokosen Indonesia was established at Jakarta in 2012. We are trading company from Japan.

Our product mainly import from Japan, China and Thailand.



### Silicone Rubber & Antioxidant KY-405

-HTV Liquid and Solid Silicone Rubber  
-Curing Agent C-8B/C-20H+

Antioxidant Application:

This product is one of the few kinds of antioxidant, which is non-toxic, tasteless, light colored. Widely apply in each kind of elastomer. It can be used in polyethylene, polypropylene, polyvinyl chloride and other plastic masterbatch.

### Hitachi Scroll Compressor & Evaporator Fan

-Horizontal Transportation Compressor  
-Horizontal Refrigeration Compressor  
-Evaporator Fan  
-Condenser Fan



### NGK Beryllium Copper

1) Beryllium Copper is highest end copper alloy.  
2) Features: High strength and higher thermal conductivity, non-sparking, non-magnetic, corrosion resistance, high performance under elevated temperatures.  
3) Application: Connector, contactor, relay, Thermal switch, mold, electrode, tube for oil drilling rig, etc.

TRAKINDO UTAMA, PT

1002



PT Trakindo Utama is the heavy equipment solution provider of Caterpillar in Indonesia and has been an authorized distributor since 1971. Supported by the world-class facilities and an extensive network of over 60 branch offices throughout Indonesia, Trakindo delivers quality services to all customers from Sabang to Merauke and supporting their business in mining, construction, forestry and agriculture, marine, oil and gas, and power generation industry.



### Internal Combustion Pneumatic Tire Lift Trucks

- Presence Detection System prevents potential accidents caused by unexpected movement of unmanned lift trucks
- Full-Suspension Seat and Tilt Steering features increases operator comfort which result in better productivity
- Environmentally friendly engines meet or exceed EPA requirements
- Fuel Saver (Soft) Mode reduces fuel consumption for maximum fuel efficiency



### Electric Power Generation

From 7.5 to 17,550 kVA of power potential, our diesel-fueled generator sets are built to world-class standards, for high efficiency, low fuel consumption and global emissions compliance. Our commercial and industrial generator sets come in a range of options to match your power needs, making selecting and installing simple. Discover power designed for your demands.



PT. Wilbert Perkasa Teknik is a company engaged in General Suppliers and Contractors mainly focused on industrial circulation. Established in 2018, PT. Wilbert Perkasa Teknik focuses on providing solutions and give the best service in industrial circulation according to our partners' need. Our goal is to be the first choice for our business partners by contributing to each of our clients more than they expect through professional service and full integrity.



### INDUSTRIAL EXHAUST FAN

TT-CF/Traftek Cone Fan is our best selling wall mounted exhaust fan. Traftek Cone Fan can be applied as 2 functions (as Output or as Input Fresh Air), with capacities ranging from 13000 cmh to 45000 cmh. Made from Fiberglass Reinforced Plastic (FRP).

TT-RCF/Traftek Roof Cone Fan is our best selling rooftop exhaust fan (Roof Ventilator). Traftek Roof Cone Fan is the right solution to solve any circulation problem in your industry, removing heat, dust, smoke, also odors. with a capacity of 45000 cmh, made from Fiberglass Reinforced Plastic (FRP).

TT-ALN/Traftek Axial Low Noise is specifically designed to improve the temperature in your industry. Traftek Axial Low Noise is ideal for Livestock Industries, Greenhouses, Production Rooms and also Industries. With capacities ranging from 8000 cmh to 44500 cmh, made from Galvanized Plate.

Type	Flow Size	Capacity (cmh)
TT-FV30	ø 34 inch	1100
TT-FV40	ø 44 inch	1400
TT-FV50	ø 54 inch	1900
TT-FV60	ø 64 inch	2390
TT-FV75	ø 78 inch	3100
TT-FV90	ø 94 inch	4200
TT-FV105	ø 110 inch	5000
TT-FV120	ø 130 inch	6700

PT. WILBERT PERKASA TEKNIK  
 Jl. Raya Cakrawala No. 100, Cakrawala, Bekasi, Jawa Barat, Indonesia  
 +62-21-7100-1000  
 www.wilbert-pt.com

**Traftek Evaporative Air Cooler (TT-AC)**

TT-AC30, TT-AC35, TT-AC40

### INDUSTRIAL ROOF VENTILATOR

Turbine Ventilator is a roof ventilator product that is installed on the roof and has passive working properties. With capacities ranging from 2398 cmh to 13158 cmh. Made from Aluminium.

### INDUSTRIAL EVAPORATIVE AIR COOLER

TT-AC/Traftek Air Cooler is specifically designed with highly efficient solution which more economical than the use of Air Conditioning / AC. Equipped with clean and safe Pre-AirFilter, Traftek Air Cooler can produce good fresh cold air. Support with the latest design and technology, Traftek Air Cooler is easy to maintain and durable. With capacities ranging from 18000 cmh to 30000 cmh.



TYKGAS Indonesia was established on Nov, 2013, located at CIMB NIAGA BUILDING Jl. MH. Thamrin Kav. 107-Lippo Cikarang 17550. Main product line are industrial gas sales, gas supply manufacturing, gas piping construction, support job for Toyoko Kagaku.



### Liquid Differentiator Sensor

This sensor can make it possible to distinguish even in environments where there is always a liquid or water which cannot be judged visually because the numerical value of the liquid type discrimination sensor can change depending on the type and concentration of the detected liquid. Then, you can freely set the threshold value so that the output signal can be output when the value changes due to liquid changes.



### Liquid Leak Sensor

The RS-3000/3500 series is a sensor that detects liquid leakage using the versatile photoelectric principle.



### Level Sensor

Level Sensor is an optical-electric device for detecting liquid in transparent or semi-transparent pipes/tubing, which is installed on the outer wall of the pipe. Installation is very simple using a bracket, anywhere you can attach a sensor to detect whether there is liquid or not.



Wiratama Mitra Abadi established 16 Sept 2004, we are stockist for electrical connector for Nanaboshi, TE, Daiwa Dengyo, Asian tools, Sanwa. We sell Display and control, measurements such as flowmeter, level, pressure etc, we do service, training and calibration. We are distributor of Rehonik German (coriolis mass flowmeter), Seametric USA, Kofloc Japan, VSE German, Fluidwell Netherland etc.



### FLOWMETER

One of the measurement to measure flow and totalizer of fluida, gas, solid etc



### LEVEL

One of the measurement to measure level of fluida, solid etc



### ELECTRICAL CONNECTOR

An electrical who use in Industrial for machine, panel etc. We are stockist for Nanaboshi, TE, Daiwa Dengyo, Asian tools, Sanwa



# MARK YOUR CALENDAR

## 2022 PAMERINDO EXHIBITIONS



26 - 29 July 2022

Jakarta International Expo Kemayoran



7 - 9 September 2022

Jakarta Convention Center, Indonesia



7 - 9 September 2022

Jakarta International Expo Kemayoran



14 - 17 September 2022

Jakarta International Expo Kemayoran



14 - 17 September 2022

Jakarta International Expo Kemayoran



14 - 17 September 2022

Jakarta International Expo Kemayoran



14 - 17 September 2022

Jakarta International Expo Kemayoran



14 - 17 September 2022

Jakarta International Expo Kemayoran



14 - 17 September 2022

Jakarta International Expo Kemayoran



22 - 24 September 2022

Bali Nusa Dua Convention Center



3 - 5 November 2022

Jakarta Convention Center, Indonesia

### MANUFACTURING SERIES EXHIBITIONS:



16 - 19 November 2022

Jakarta International Expo Kemayoran



30 Nov - 03 Dec 2022

Jakarta International Expo Kemayoran



30 Nov - 03 Dec 2022

Jakarta International Expo Kemayoran

Organised by:



PT PAMERINDO INDONESIA

Menara Jamsostek 12th floor Unit TA-12-04

Jl. Jendral Gatot Subroto No.38 Jakarta 12710, Indonesia

+ 62 21 2525 320

info@pamerindo.com

Sustainable Events



# THANKS TO OUR PARTNERS

Supported by:



Industrial Estate Partner:



University Partner:



PR Partner:



## MEDIA PARTNERS



## ABOUT THE ORGANISER



PT Pamerindo Indonesia is the leading trade fair organiser in Indonesia, established with the sole purpose of organising specialised trade exhibitions for the Indonesian market. The company has grown considerably and now regularly organises over 20 trade exhibitions in the following sectors: Beauty, Building & Construction, Electric & Power, Food & Hotel, Laboratory, Manufacturing, Mining, Plastics & Rubber, Oil & Gas sectors. Since its inception PT Pamerindo Indonesia has organised over 200 international trade exhibitions in Jakarta, Surabaya, and Bali.

PT Pamerindo Indonesia is part of Informa Markets, a division of Informa plc. Informa Markets creates platforms for industries and specialist markets to trade, innovate and grow. Our portfolio is comprised of more than 550 international B2B events and brands in markets including Healthcare & Pharmaceuticals, Infrastructure, Construction & Real Estate, Fashion & Apparel, Hospitality, Food & Beverage, and Health & Nutrition, among others.

We provide customers and partners around the globe with opportunities to engage, experience and do business through face-to-face exhibitions, specialist digital content and actionable data solutions. As the world's leading exhibitions organiser, we bring a diverse range of specialist markets to life, unlocking opportunities and helping them to thrive 365 days of the year.

For more information, please visit [www.informamarkets.com](http://www.informamarkets.com)



THE ADVANCED MANUFACTURING  
TECHNOLOGY SERIES

ORGANISED BY:  
**informa**  
markets

# NORTH AMERICA'S ENGINEERING & ADVANCED MANUFACTURING EVENTS



## ANAHEM, CA

**12-14 APR 2022**  
ATX WEST | MD&M WEST |  
PACIFIC DESIGN &  
MANUFACTURING  
Anaheim Convention Center

## BOSTON, MA

**28-29 SEP 2022**  
BIOMEDEVIC BOSTON |  
DESIGN & MANUFACTURING  
NEW ENGLAND  
Boston Convention & Exhibition  
Center

## MINNEAPOLIS, MN

**2-3 NOV 2022**  
ATX MINNEAPOLIS | DESIGN &  
MANUFACTURING MINNEAPOLIS  
| MD&M MINNEAPOLIS  
Minneapolis Convention Center

## TORONTO, ON

**9 - 11 MAY 2023**  
ADVANCED DESIGN &  
MANUFACTURING (ADM) EXPO  
FEATURING ATX / DESIGN &  
MANUFACTURING  
Toronto Convention Center

## NEW YORK, NY

**13-15 JUN 2023**  
ATLANTIC DESIGN &  
MANUFACTURING |  
ATX EAST | MD&M EAST  
Jacob K.Javits Convention Center

## SAN JOSE, CA

**29-30 NOV 2022**  
BIOMEDEVIC SAN JOSE  
San Jose Convention Center

## MONTRÉAL, CANADA

**9 - 10 NOV 2022**  
ADVANCED DESIGN &  
MANUFACTURING (ADM) EXPO  
FEATURING ATX / DESIGN &  
MANUFACTURING  
Palais des congrès de Montréal

### To Find Out More:

**Website:** <https://findmanufacturingbuyers.com/>

**Tel:** +(1) 844-826-4249

**Email:** [exhibiting.advmfg@informa.com](mailto:exhibiting.advmfg@informa.com)



# SOUTH AMERICA'S MACHINE TOOL & MANUFACTURING EQUIPMENT EXHIBITIONS

SÃO PAULO, BRAZIL

## FEIMEC

**3-7 MAY 2022**  
Sao Paulo Expo Exhibition &  
Convention Center

## EXPOMAFE

**9-13 MAY 2023**  
Sao Paulo Expo Exhibition &  
Convention Center

### To Find Out More:

**Website:** [www.expomafe.com.br](http://www.expomafe.com.br) | [www.feimec.com.br](http://www.feimec.com.br)

**Tel:** +(55) 11 4632-0316

**Email:** [manuel.niggli@informa.com](mailto:manuel.niggli@informa.com)







THE ADVANCED MANUFACTURING  
TECHNOLOGY SERIES

ORGANISED BY:  
**informa  
markets**

# ASIA'S LEADING MACHINE TOOL, MANUFACTURING & SUBCONTRACTING INDUSTRY SHOWS

## KUALA LUMPUR, MALAYSIA

**METALTECH automEX**

**21-24 JUN 2023**

Malaysia International Trade & Exhibition Centre (MITEC)

## JAKARTA, INDONESIA

A PAMERINDO INDONESIA TRADE EVENT  
**MANUFACTURING INDONESIA**

A PAMERINDO INDONESIA TRADE EVENT  
**MACHINE TOOL INDONESIA**

**30 NOV - 3 DEC 2022**

Jakarta International Expo (JIExpo) Kemayoran

## HO CHI MINH CITY, VIETNAM

**mtc  
VIETNAM**

**5-8 JUL 2023**

Saigon Exhibition & Convention Center (SECC)

## HANOI, VIETNAM

**mtc  
HANOI**

**12-14 OCT 2022**

International Center for Exhibition (I.C.E)

YANGON  
MYANMAR

HANOI, VIETNAM

HO CHI MINH CITY, VIETNAM

BANGKOK, THAILAND

KUALA LUMPUR, MALAYSIA

JAKARTA, INDONESIA

SURABAYA  
INDONESIA

## SURABAYA, INDONESIA

A PAMERINDO INDONESIA TRADE EVENT  
**MANUFACTURING SURABAYA**

**12-15 JUL 2023**

Grand City Convention & Exhibition Centre, Surabaya

## BANGKOK, THAILAND

**INTERMACH** **SUBCON THAILAND** **mtc ASIA**

**18-21 MAY 2022**

Bangkok, Thailand

## CHONBURI, THAILAND

**SUBCON THAILAND** **MIRA**

**24-26 AUGUST 2022**

Choburi, Thailand

### To Find Out More:

**Website:** [www.informamarkets.com/en/markets/event-listing](http://www.informamarkets.com/en/markets/event-listing)

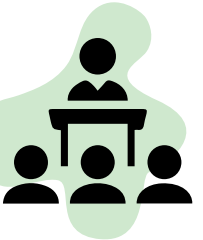
**Email:** [machine-isoa@informa.com](mailto:machine-isoa@informa.com)



# How are Pamerindo's events sustainable?



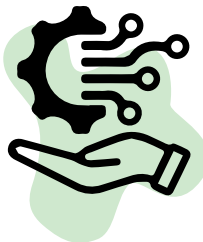
Pamerindo's Events are powered by renewable energy making the electricity usage carbon neutral



We facilitate the discussion and knowledge on sustainability. Visit our website for more details



We are carefully designing our feature areas to minimise the level of waste generated



Digital adoption to reduce paper



Partner with different organization for sustainability business



Promote reused items to participants eg. reused bottle, reused bag, reused pallet



Working with suppliers to focus on environmental impact



Hand in your lanyard for reuse



Catering fresh and locally sourced

Organised by:



Sustainable Events



This event is powered by **Renewable Electricity**







For exhibiting & visiting, please contact:



**PT. PAMERINDO INDONESIA**

Menara Jamsostek  
12th floor Unit TA-12-04  
Jl. Jendral Gatot Subroto No.38  
Jakarta 12710, Indonesia

☎ + 62 21 2525 320

✉ manufacturing@pamerindo.com

www.pamerindo.com

**Booth enquiries:**

Farah Alkatiri

Sales Manager

☎ +62 21 2525 320

✉ faradiba@pamerindo.com

**Content & promotion:**

Kartina Lydiawati

Event & Marketing Manager

☎ +62 818 689 666

✉ kartina@pamerindo.com

